


# YCSi series

Zigbee Smart Circuit Breaker

OPERATION INSTRUCTION

**CNC**

Deliver  
Power For Better Life

 Before installing and using this product, please read this manual carefully and pay more attention to safety.

## **YCSi series**

### **Zigbee Smart Circuit Breaker**

#### **1.Scope and characteristics of application**

Intelligent circuit breaker for AC50Hz, Rated operating voltage 230V , Rated working current 63A and the following user or load, Good-looking , Good and reliable performance, split/merge fast , Modular rail type installation. Mainly used for family, shopping malls, office buildings.hotels.schools. hospitals,villas and so on.

#### **2 Product function**

2.1 Automatic closing, Products

in the normal line, power can be automatically closed, can also be set when the switch is not closed.

2.2 Wireless Control: Mobile APP Remote Control On/off.

2.3 Real time feedback: Real-time feedback of product split/close status.

2.4 Timing: Timing on/off.

2.5 Share control : Can share more people controls.

2.6 Residual current protection :

When the leakage current is greater than the set value or personal electric shock (with leakage protection) , the protector automatically disconnects within 0.1 s.

#### **3 Normal working conditions**

### 3.1 Ambient air temperature

a The upper limit shall not exceed 40°C

b The lower limit shall not be lower than -5 °c

c The average value within 24h does not exceed 35°C

d Limit service temperature -25°C ~ 70°C

### 3.2 Altitude

The elevation of the installation site shall not exceed 2,000 metres.

### 3.3 Atmospheric condition

a When the ambient air temperature is + 40 °C, the relative humidity of the air does not exceed 50%, Higher relative humidity can be achieved at lower temperatures.

b When the monthly mean minimum temperature of the wettest month is 25 °C, the monthly mean phase humidity is 90%.

c Condensation on the surface of the product due to a change in temperature has been taken into account.

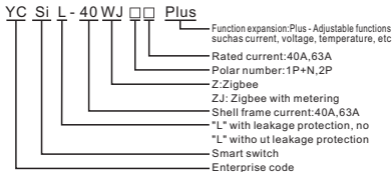
### 3.4 Pollution level

The pollution level used in the circuit breaker is level 2.

### 3.5 Type of installation

Class I, Class III installation

## **4.Type and meaning**



Note: 1P without leakage protection, 2P can choose with leakage protection and without leakage protection.

## 5 Technical parameter

5.1 Rated operating voltage : AC230V

5.2 Rated current In: 1A-63A

5.3 Life Span:Electrical Life, on and off 100000 times.

5.4 Power consumption of this product : <3w

5.5 Operating voltage range : AC120V-280V

5.6 Maximum rated output current : In63A

5.7 Wiring: Using clamp wiring terminal, The cross-sectional area of the connecting cable can reach 16mm<sup>2</sup>

5.8 Installation: installed on 35\*7.5 mm standard guide2rail

## 6 Installation

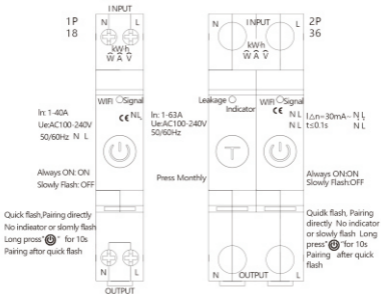
6.1 The outline dimension drawing and the installation dimension drawing are shown in Fig. 1 and Fig.2

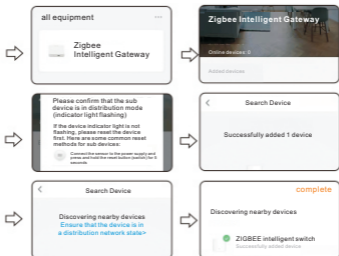
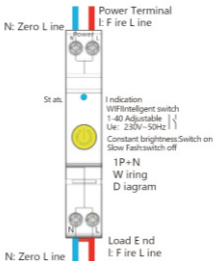
6.2 Wiring Diagram: See Fig. 3

6.3 Installation method The circuit breaker shall be mounted vertically on the mounting rail, which shall be fixed to the plywood or metal plate with M5 screws. And then install the product.



fig 2





12.Voice Control : Can connect TMALL elve, XIAODU and other smart speakers , through voice control of the product on/off.

13 : Points to note

13.1 The products be protected from rain water during transportation and storage, and the product shall be stored in a place with air circulation.

13.2 Dust and dirt should be removed regularly during use.

13.3 The basic technical data on the nameplate or sign should be checked before use.

13.4 The parameter protection characteristic of this product is set by the manufacturer, and can not be adjusted in use.

13.5 Zero wire must be connected correctly.

13.6 Tighten the connection screw before use to avoid bad contact and damage to the product.

13.7 The setting temperature of this series of circuit breakers is  $30 \pm 5^{\circ}\text{C}$ . if several circuit breakers are installed in the same sealed box, the capacity reduction Coefficient should be 0.8.

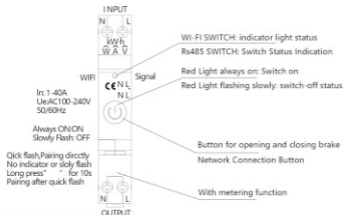
14 The signal indicator is not on: Please check.

14.1 Whether the power cord is connected as required ( The zero wire/fire wire must be correctly connected to the corresponding zero wire/fire wire of the distribution system).

14.2 Is The power supply voltage normal.

Note: This product can not be used as the main

brake, the front end of the product to be installed short-circuit protection circuit breaker.



1P+N Panel description

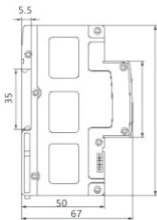


fig 1

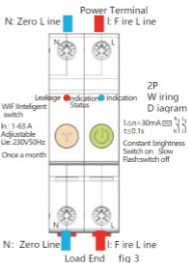
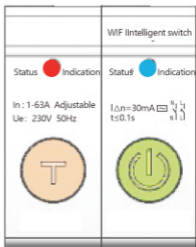
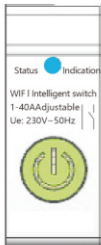


fig 3





Constant brightness: Switch on  
Slow Flash: switch off

1P+N

fig 4

Once a month

Constant brightness:  
Switch on Slow Flash:  
switch off

2P

## 7 Operation Trial and panel instructions: Panel see fig.4

### 7.1 Operating instructions

7.1.1 Click the "🔌" button to switch on/off

7.1.2 Long Press "🔌" for 10 seconds. Match status.

### 7.2 Light indication

7.2.1 Red Light always on: Switch on.

7.2.2 Red Light slow flash: switch off.

7.2.3 The signal light flashed quickly: Pairing state

Note: Sending instructions must be connected to the power supply of the product and keep the

communication status.

10 Install doodler "tuya" APP.

10.1 Direct scan figure 5 Installation.

fig 5



10.2 Download "tuya Smart" app. Search "smart life" in App Store for IOS version or Google play for android version.

10.3 Apple searches the APP store for "smart life" APP and installs it.

10.4 As shown in figure 2, the circuit breaker according to the requirements of the correct wiring and electrification, to circuit breaker signal indicator light.

11 : Distribution Network

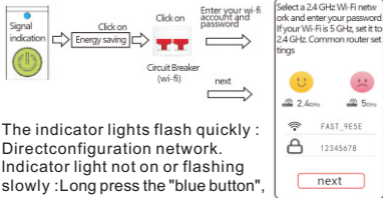
11.1 Run "tuya Smart", Click "+" in the upper right corner and pop up "add manually".

11.2 The device was successfully added and then automatically connected to the network. The connection may take a few minutes. Please be patient. When the indicator light (green light) is always on, the connection is successful.

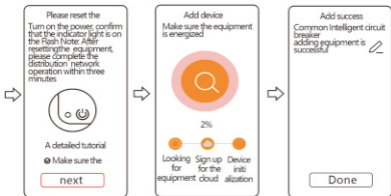
11.3 When the indicator is always on and the connection is successful, the switch can be operated on the mobile phone APP.

11.4 When the network is connected, the circuit breaker can be operated on/off, sharing, timing, delay, user operation notification, power-on status and so on.

If the signal indicator light is not bright or slow flash, you need to press the "blue button" key for about 10 seconds, when the signal indicator light flash after release, into the distribution network state.



The indicator lights flash quickly : Direct configuration network.  
Indicator light not on or flashing slowly : Long press the "blue button", fast flicker after matching network after.





# CERTIFICATE

Product Model: YCSi series

Inspector: **CNC001**

Production date: Printed on the product  
or package.

This product is qualified according  
to the delivery inspection

**CNC**

YCSi series

## CNC ELECTRIC

Tel: 0086-577-61989999 Fax: 0086-577-61891122

www.cncele.com E-mail: cncele@cncele.com