

Motor Control & Protection

YCQR7-G Soft Starter

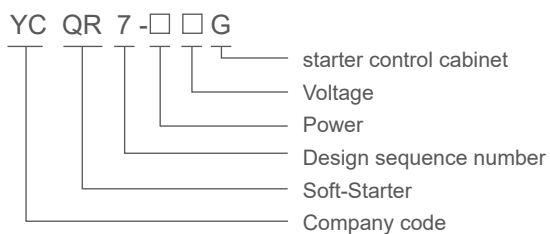


General

The YCQR7-G soft starter control cabinet is used in situations where a motor is running. The control cabinet contains a soft starter primarily used for the smooth start of the motor, avoiding the impact and pressure during startup. It is typically employed in scenarios with large motors or where frequent starting and stopping is required, extending the motor's lifespan and enhancing system stability.

Soft starter cabinets are widely used in industrial sectors, energy fields, mining, and other heavy-duty equipment applications.

Type designation



Operating conditions

1. Incoming line power supply: AC 380V \pm 5% 50/60 Hz
2. Power supply is applicable: mouse cage three-phase asynchronous motor
3. Cooling mode: forced air cooling
4. App licable temperature: $-10^{\circ}\text{C} \sim \pm 40^{\circ}\text{C}$,1 $^{\circ}\text{C}$,2%, + 50 $^{\circ}\text{C}$
5. App licable humidity: 90% without frost
6. Place of use: No corrosive gas without conductive dust indoor is well ventilated
7. Elevation vibration: The altitude is below 3000 meters, and the vibration power device is below 0.5G.

Motor Control & Protection

YCQR7-G Soft Starter

Technical data

Project name		performance index
Scope of application		3 phase rat cage asynchronous motor
Power bracket		5.5-450kW
Input voltage		380V ± 15%
Supply frequency		50/60HZ ± 5%
Overload capacity		400%60sec,120% continuous
Adjustable current multiple		From 1 to 5 times each time
Soft up time		1-90 Seconds
Module working mode		over a long period of time
Cooling-down method		forced air cooling
Secondary interace terminal	On-off input	3 Road
	Relay output	1 (programmable) or 3 (programmable)
	4-20MA	Route (extension is optional)
	RS485	1-way (extended as optional)
Protect		Short circuit speed break, overcurrent, overheat protection, reverse time overload, voltage phase deficiency, imbalance, Insient stop, undervoltage, overvoltage, underload, starting failure, phase sequence error.
Host overload protection		Overload and reverse time limit, level 1 -5 is optional
Host current imbalance protection		Unbalanced trip standard: 5- 100% any two-phase unbalanced trip delay: 1-60 seconds can be set
Host short circuit protection		Quick break time . 0.18, can be set
Bus function		Interface : RS485 protocol · ModbusRTU
Human-computer interface		4 Line COG Screen
Language		Chinese, English

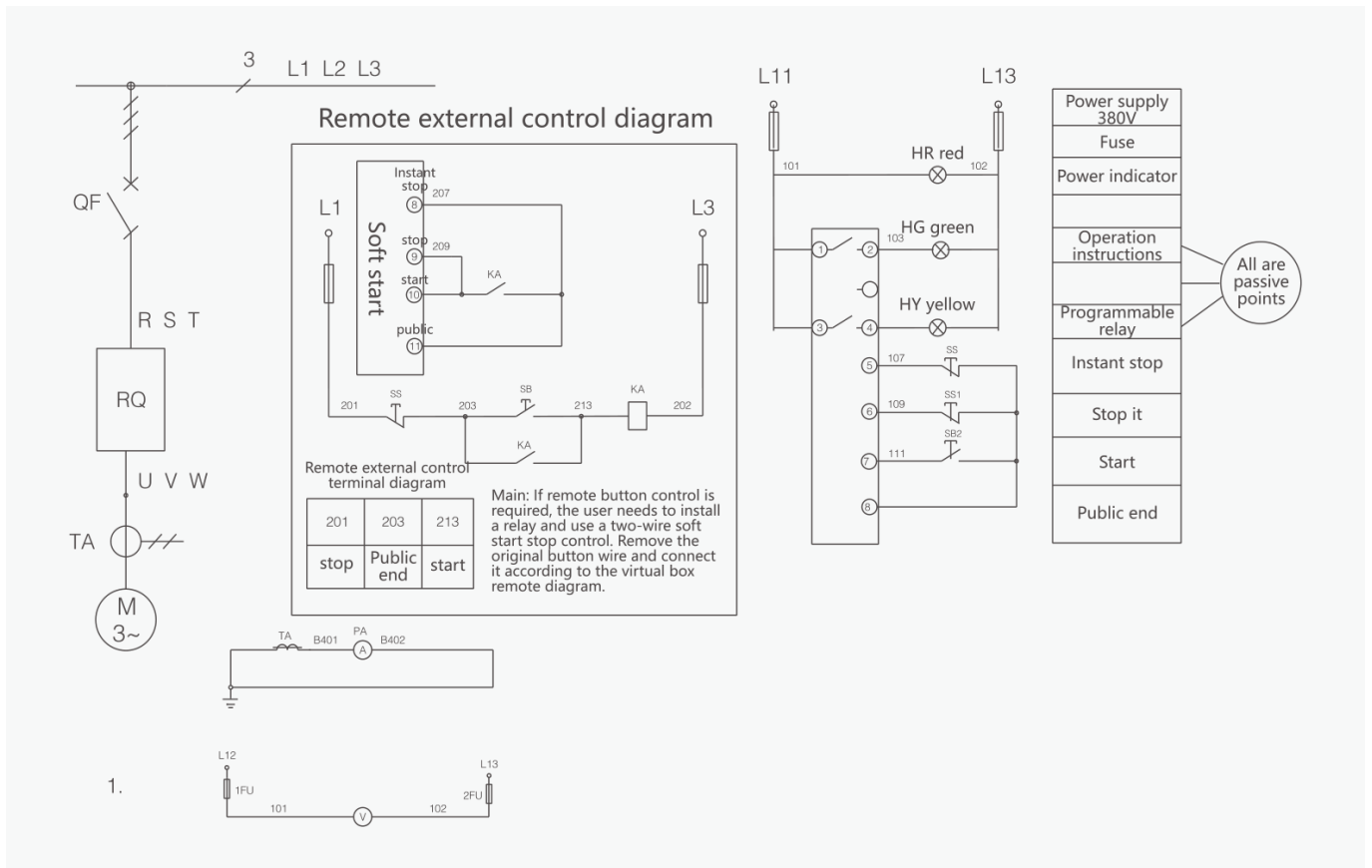


Motor Control & Protection

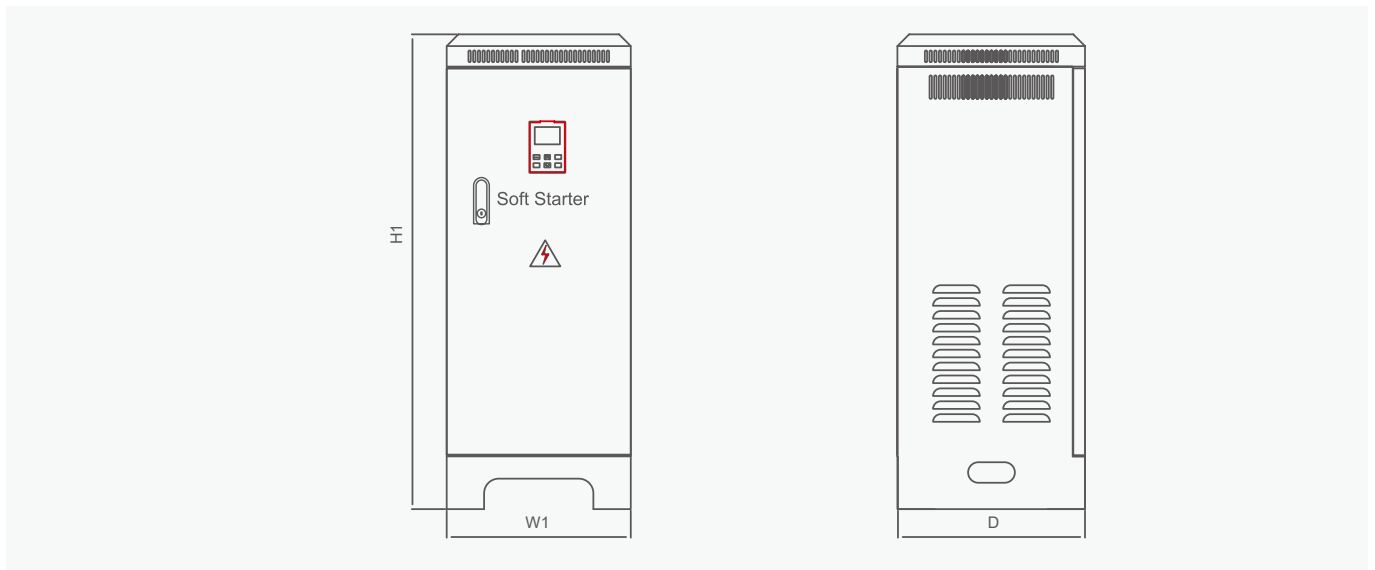
YCQR7-G Soft Starter

Wiring diagram

C



Overall and mounting dimensions(mm)



Specifications and models	Overall dimensions(mm)			
	D	W1	H1	D
YCQR7-G	5.5KW-30KW	315	810	320
	37KW-45KW	350	1000	400
	55KW-115KW	400	1160	400