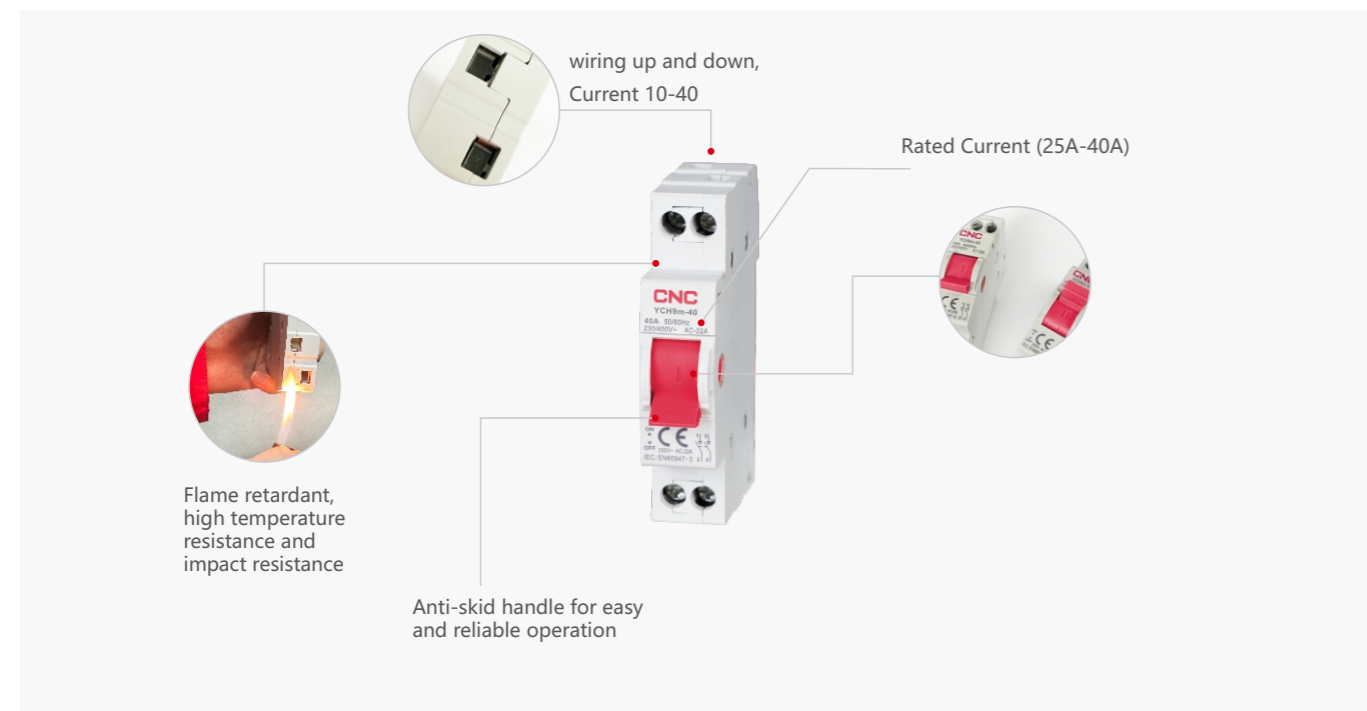


Modular DIN Rail

YCH9m-40 Isolating Switch



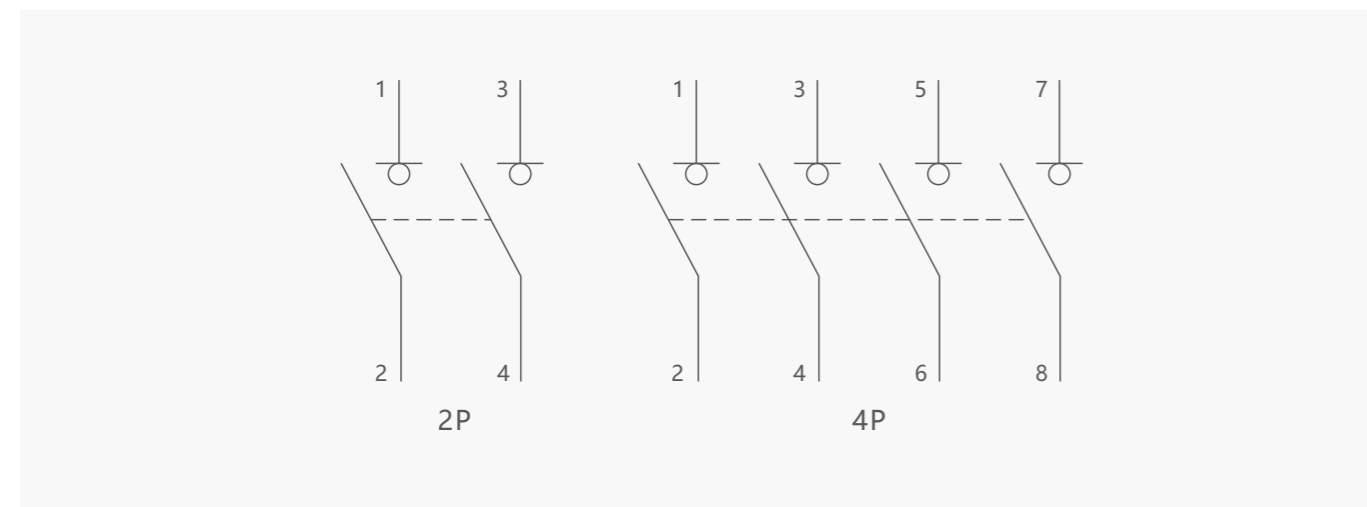
General

9mm Modular ISOLATOR YCH9m-40 was designed according to IEC 60947-3. It meets the demand of loading and isolating the circuit. It is used as a main switch in distribution boxes in household applications or as a switch for individual electric circuits, easily to be assembled and work with the same series compact circuit breakers together.

Features

1. Rated Current up to 40A
2. Only 9mm for 1P
3. Frameworks are 2P/4P
4. Compatible with customized busbar

Wiring diagram



Modular DIN Rail

YCH9m-40 Isolating Switch

Technical data

Type	Standard		IEC/EN 60947-3	
Electrical features	Poles	P	2P, 4P	
	Rated voltage Ue	V	240/415	
	Rated current Ie	A	25,40	
	Rated frequency	Hz	50/60	
	Rated impulse withstand voltage Uimp	V	4000	
	Rated short-time withstand current Icw	A	480	
	Rated short circuit making capacity Icm	A	480	
	Pollution degree			3
Mechanical features	Insulation voltage Ui	V	500	
	Electrical life	t	1500	
	Mechanical life	t	8500	
	Protection degree			IP20
	Ambient temperature(with daily average ≤35°C)	°C		-5 ~ +40
	Mounting			On DIN rail EN 60715(35mm)by means of fast clip device
	Terminal capacity	t		1-10mm ²
	Busbar specification	t		08-2.5mm
Terminal fastening torque			1.2N.m	

Overall and mounting dimensions(mm)

