

YCCH6Z AC/DC Coil Modular contactor

General

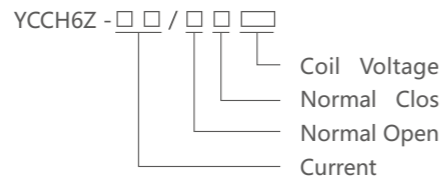
YCCH6Z series AC contactor (hereinafter referred to as the household appliances control a contactor) is used for remote switch on and off without a sense of feeling or low load, resistance furnace, household appliances and similar low load, motor and other household.

The main contactor is used in AC 50Hz/60Hz, rated voltage to 400V, rated current of power system to 100A, AC-1, AC-7a (in no sense or sense of low load, resistance furnace, household appliances and similar low load) categories, long distance switch and control circuit.

Contactor is not used for breaking short circuit current, so it is necessary to choose suitable short circuit protection electrical equipment.

Standard: IEC/EN 61095

Type designation



(eg. YCCH6Z-25/20 AC/DC24V . It is 25A , 2NO ,230V AC/DC coil voltage)



1P, 1Modules

Contactor Model	Ie Rating		Uc	Circuit Diagram
	AC-7a AC-1	AC-7b AC-3		
YCCH6Z-16/10	16A	6A	12V AC/DC 24V AC/DC 48V AC/DC 110V AC/DC 230V AC/DC	
YCCH6Z-20/10	20A	7A		
YCCH6Z-25/10	25A	9A		
YCCH6Z-32/10	32A	12A	12V AC/DC 24V AC/DC 48V AC/DC 110V AC/DC 230V AC/DC	
YCCH6Z-16/01	16A	6A		
YCCH6Z-20/01	20A	7A		
YCCH6Z-25/01	25A	9A	12V AC/DC 24V AC/DC 48V AC/DC 110V AC/DC 230V AC/DC	
YCCH6Z-32/01	32A	12A		



1P, 2Modules

Contactor Model	Ie Rating		Uc	Circuit Diagram
	AC-7a AC-1	AC-7b AC-3		
YCCH6Z-40/10	40A	18A	12V AC/DC 24V AC/DC 48V AC/DC 110V AC/DC 230V AC/DC	
YCCH6Z-63/10	63A	25A		
YCCH6Z-40/01	40A	18A		
YCCH6Z-63/01	63A	25A	12V AC/DC 24V AC/DC 48V AC/DC 110V AC/DC 230V AC/DC	

YCCH6Z AC/DC Coil Modular contactor



2P, 1Modules

Contactor Model	Ie Rating		Uc	Circuit Diagram
	AC-7a AC-1	AC-7b AC-3		
YCCH6Z-16/20	16A	6A	12V AC/DC 24V AC/DC 48V AC/DC 110V AC/DC 230V AC/DC	
YCCH6Z-20/20	20A	7A		
YCCH6Z-25/20	25A	9A		
YCCH6Z-32/20	32A	12A	12V AC/DC 24V AC/DC 48V AC/DC 110V AC/DC 230V AC/DC	
YCCH6Z-16/11	16A	6A		
YCCH6Z-20/11	20A	7A		
YCCH6Z-25/11	25A	9A	12V AC/DC 24V AC/DC 48V AC/DC 110V AC/DC 230V AC/DC	
YCCH6Z-32/11	32A	12A		
YCCH6Z-16/02	16A	6A	12V AC/DC 24V AC/DC 48V AC/DC 110V AC/DC 230V AC/DC	
YCCH6Z-20/02	20A	7A		
YCCH6Z-25/02	25A	9A		
YCCH6Z-32/02	32A	12A		



2P, 2Modules

Contactor Model	Ie Rating		Uc	Circuit Diagram
	AC-7a AC-1	AC-7b AC-3		
YCCH6Z-40/20	40A	18A	12V AC/DC 24V AC/DC 48V AC/DC 110V AC/DC 230V AC/DC	
YCCH6Z-63/20	63A	25A		
YCCH6Z-40/11	40A	18A		
YCCH6Z-63/11	63A	25A	12V AC/DC 24V AC/DC 48V AC/DC 110V AC/DC 230V AC/DC	
YCCH6Z-40/02	40A	18A		
YCCH6Z-63/02	63A	25A		



3P, 2Modules

Contactor Model	Ie Rating		Uc	Circuit Diagram
	AC-7a AC-1	AC-7b AC-3		
YCCH6Z-16/30	16A	6A	12V AC/DC 24V AC/DC 48V AC/DC 110V AC/DC 230V AC/DC	
YCCH6Z-20/30	20A	7A		
YCCH6Z-25/30	25A	9A		
YCCH6Z-32/30	32A	12A	12V AC/DC 24V AC/DC 48V AC/DC 110V AC/DC 230V AC/DC	
YCCH6Z-16/03	16A	6A		
YCCH6Z-20/03	20A	7A		
YCCH6Z-25/03	25A	9A	12V AC/DC 24V AC/DC 48V AC/DC 110V AC/DC 230V AC/DC	
YCCH6Z-32/03	32A	12A		

YCCH6Z AC/DC Coil Modular contactor



3P, 3Modules

Contactor Model	Ie Rating		Uc	Circuit Diagram
	AC-7a AC-1	AC-7b AC-3		
YCCH6Z-40/30	40A	18A	12V AC/DC 24V AC/DC 48V AC/DC 110V AC/DC 230V AC/DC	
YCCH6Z-63/30	63A	25A		
YCCH6Z-40/03	40A	18A	12V AC/DC 24V AC/DC 48V AC/DC 110V AC/DC 230V AC/DC	
YCCH6Z-63/03	63A	25A		

4P, 2Modules

Contactor Model	Ie Rating		Uc	Circuit Diagram
	AC-7a AC-1	AC-7b AC-3		
YCCH6Z-16/40	16A	6A	12V AC/DC 24V AC/DC 48V AC/DC 110V AC/DC 230V AC/DC	
YCCH6Z-20/40	20A	7A		
YCCH6Z-25/40	25A	9A		
YCCH6Z-32/40	32A	12A		
YCCH6Z-16/04	16A	6A	12V AC/DC 24V AC/DC 48V AC/DC 110V AC/DC 230V AC/DC	
YCCH6Z-20/04	20A	7A		
YCCH6Z-25/04	25A	9A		
YCCH6Z-32/04	32A	12A		
YCCH6Z-16/22	16A	6A	12V AC/DC 24V AC/DC 48V AC/DC 110V AC/DC 230V AC/DC	
YCCH6Z-20/22	20A	7A		
YCCH6Z-25/22	25A	9A		
YCCH6Z-32/22	32A	12A		
YCCH6Z-16/31	16A	6A	12V AC/DC 24V AC/DC 48V AC/DC 110V AC/DC 230V AC/DC	
YCCH6Z-20/31	20A	7A		
YCCH6Z-25/31	25A	9A		
YCCH6Z-32/31	32A	12A		



YCCH6Z AC/DC Coil Modular contactor



4P, 3Modules

Contactor Model	Ie Rating		Uc	Circuit Diagram
	AC-7a AC-1	AC-7b AC-3		
YCCH6Z-40/40	40A	18A	12V AC/DC 24V AC/DC 48V AC/DC 110V AC/DC 230V AC/DC	
YCCH6Z-63/40	63A	25A		
YCCH6Z-40/04	40A	18A	12V AC/DC 24V AC/DC 48V AC/DC 110V AC/DC 230V AC/DC	
YCCH6Z-63/04	63A	25A		
YCCH6Z-40/22	40A	18A	12V AC/DC 24V AC/DC 48V AC/DC 110V AC/DC 230V AC/DC	
YCCH6Z-63/22	63A	25A		
YCCH6Z-40/31	40A	18A	12V AC/DC 24V AC/DC 48V AC/DC 110V AC/DC 230V AC/DC	
YCCH6Z-63/31	63A	25A		

Modular contactor power consumption

Poles	Ie Rating		Uc (VAC)(50Hz)	Power consumption		Max power
	AC-7a	AC-7b		Hold on	Pull in	
2P	16A	6A	230	2.1VA	2.1VA	2.0VA
	20A	7A	230	2.1VA	2.1VA	2.0VA
	25A	9A	230	2.1VA	2.1VA	2.0VA
	32A	12A	230	2.1VA	2.1VA	2.0VA
	40A	18A	230	2.3VA	2.3VA	2.0VA
	63A	25A	230	2.3VA	2.3VA	2.0VA
	4P	16A	6A	230	2.3VA	2.3VA
20A		7A	230	2.3VA	2.3VA	2.0VA
25A		9A	230	2.3VA	2.3VA	2.0VA
32A		12A	230	2.3VA	2.3VA	2.0VA
40A		18A	230	6.0VA	6.0VA	5.5VA
63A		25A	230	6.0VA	6.0VA	5.5VA

YCCH6Z AC/DC Coil Modular contactor

Modular contactor auxiliary

Auxiliary Contacts

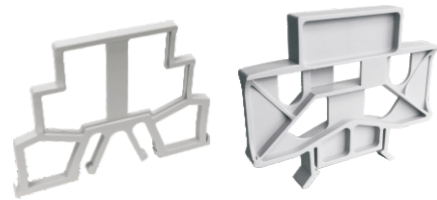
The Auxiliary contacts are indicator contactor contacts status switch OFF or ON



	AC-12		AC-12		AC-12		Rated Current	Circuit Diagram
	C.V.	V.A.	C.V.	V.A.	C.V.	V.A.		
YCCH6Z-AUC11	240V	5A	240V	5A	240V	5A	5A	
YCCH6Z-AUC20	240	5A	240	5A	240	5A	5A	

Spacing piece

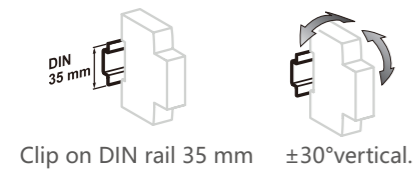
Spacers are used to reduce the temperature rise of devices mounted side by side. It is recommended to separate electronic equipment (temperature adjustment devices, programmable timer etc.) from electromechanical equipment (impulse relays, contactors)



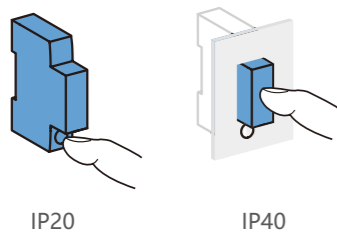
	Technical specifications
YCCH6Z-AUC11	3mm Spacing piece
YCCH6Z-AUC20	9mm Spacing piece

Main parameter and technical performance

Power circuit		
Voltage rating (Ue)	1P, 2P	250V AC
	3P, 4P	400V AC
Frequency	50/60Hz	
Endurance(O-C)	1,000,000 cycles	
Electrical	100,000 cycles	
Maximum number of switching operation a day	100	
Insulation vwltag (Ui)	500 V AC	
Pollution degree	2	
Rated impulse withstand voltage (Uimp)	2.5kV(4kV for 12/24/48VAC)	
Degree of protection (IEC 60529)	Device only	IP20
	Device in modular enclosure	IP40
Operating temperature	-5°C~+60°C	
Storage temperature	-40°C~+70°C	
Tropicalization (IEC 60068.1)	Treatment 2 (relative humidity 95% at 55°C)	
ELSV compliance(Extra Low Safety Voltage)for 12/24/48vac versions		
The product control conforms to the SELV (safety extra low voltage) requirements		

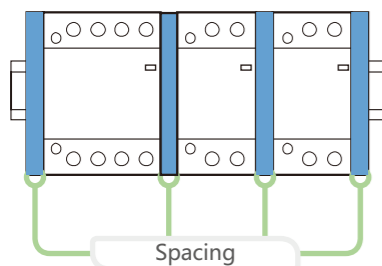


Clip on DIN rail 35 mm ±30°vertical.



IP20

IP40



Spacing

(1)In the case of contactor mounting in a enclosure for which the interior temperature is in range between 50 °C and 60 °C, it is necessary to use a spacer, between each contactor

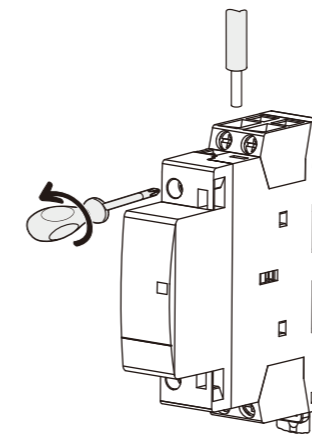
YCCH6Z AC/DC Coil Modular contactor

Packing information

Poles	Rated Current (A)	Box Qty	CTN Qty	Automatic Contactor		Automatic Contactor		Carton Size (mm)
				G.W.(kg)	N.W.(kg)	G.W.(kg)	N.W.(kg)	
2P	16	230	2.1VA	2.1VA	2.0VA	2.1VA	2.0VA	500×260×190
	20	230	2.1VA	2.1VA	2.0VA	2.1VA	2.0VA	500×260×190
	25	230	2.1VA	2.1VA	2.0VA	2.1VA	2.0VA	500×260×190
	32	230	2.1VA	2.1VA	2.0VA	2.1VA	2.0VA	500×260×190
	40	230	2.3VA	2.3VA	2.0VA	2.3VA	2.0VA	500×260×190
	63	230	2.3VA	2.3VA	2.0VA	2.3VA	2.0VA	500×260×190
4P	16	230	2.3VA	2.3VA	2.0VA	2.3VA	2.0VA	500×260×190
	20	230	2.3VA	2.3VA	2.0VA	2.3VA	2.0VA	500×260×190
	25	230	2.3VA	2.3VA	2.0VA	2.3VA	2.0VA	500×260×190
	32	230	2.3VA	2.3VA	2.0VA	2.3VA	2.0VA	500×260×190
	40	230	6.0VA	6.0VA	5.5VA	6.0VA	5.5VA	500×260×190
	63	230	6.0VA	6.0VA	5.5VA	6.0VA	5.5VA	500×260×190

Type	Box Qty	CTN Qty	G.W.(kg)	N.W.(kg)	Carton Size (mm)
Auxiliary Contacts	12	120	5.56	3.96	500×260×190
3mm Spacing piece	72	720	5.56	3.36	500×260×190
9mm spacing piece	24	360	6.38	5.18	455×230×240

Connection parameter



Type	Rating	Lenght tripping	Circuit	Tightening torque	Copper cables		
					Rigid	Flexible or ferrule	
YCCH6Z	PZ1:4mm	9mm	Control	0.8N.m	1.5~2.5mm ² 2×1.5mm ²	1.5~2.5mm ² 2×2.5mm ²	
					16-32A	1.5~6mm ²	1~4mm ²
	PZ2:6mm	40A-63A	14mm	Power	3.5N.m	6~25mm ²	6~16mm ²
BACTs	PZ1:4mm	-	9mm	-	0.8N.m	1.5~2.5mm ² 2×1.5mm ²	1.5~2.5mm ² 2×2.5mm ²

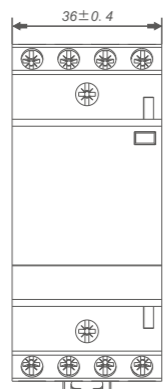
YCCH6Z AC/DC Coil Modular contactor

Product dimensions (mm)

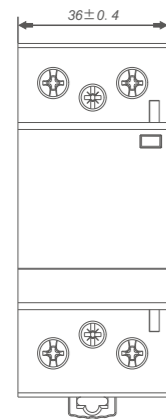
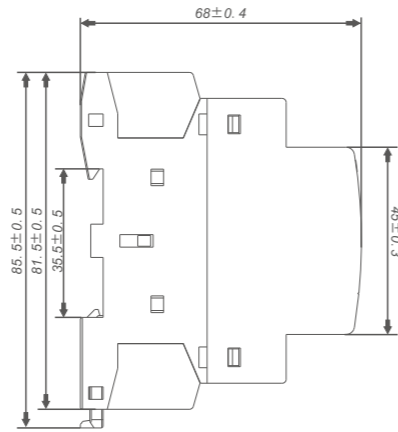


1P/2P

YCCH6Z-16/20/25/32

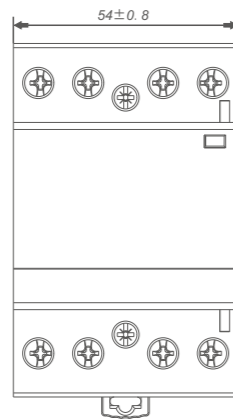


3P/4P

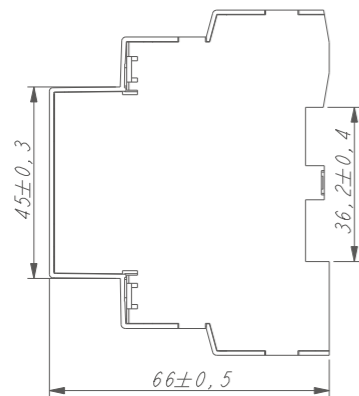
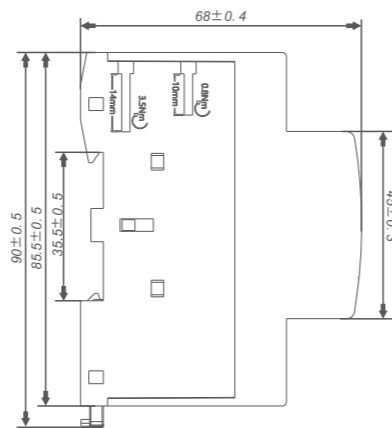


1P/2P

YCCH6Z-40/63



3P/4P



YCCH6Z-AUC

