

XB5 series

Push-button switch

OPERATION INSTRUCTION

Standard: IEC 60947-5-1

CNC

Deliver
Power For Better Life



Before installing and using this product, please read this manual carefully and pay more attention to safety.

1.Range of application

1.1 XB5 series button is suitable for the industrial control circuit in which AC 50Hz or 60Hz, rated working voltage AC to 380V,DC to 250V. It can be used as the electromagnetic starter, contactor, relay or the controller of other electrical circuits. And the button with indicator light can be applied in light signal condition.

2.XB5 series type explain

Button switch

XB5	-	A	A	1	1
Model	-	Material	Operating mechanism	Color	Contact
XB5 series	-	A:Plastic	A:Flat head push button L:Extended push button	1:White 2:Black 3:Green 4:Red 5:Yellow 6:Blue	1:1 NO 2:1 NC 3:2 NO 4:2 NC 5:1 NO +1NC

Mushroom head emergency stop button

XB5	-	A	C	1	1
Model	-	Material	Operating mechanism	Color	Contact
XB5 series	-	A:Plastic	C: ∅40mm Mushroom head button	2:Black 3:Green 4:Red 5:Yellow	1:1 NO 2:1 NC 3:2 NO
			T: ∅40mm Push-pull button S5:∅40mm Emergency stop push button S1:∅40mm Emergency stop push button Key	4:Red	4:2 NC 5:1 NO +1NC

Push button with light selection

XB5	-	A	W3	1	6	1
Model	-	Material	Operating mechanism	Color	Base Type	Contact
XB5 series	-	A:Plastic	W3:Flat head button with light	1:White 3:Green 4:Red 5:Yellow 6:Blue	6:Direct type	1:1 NO 2:1 NC 3:2 NO 4:2 NC 5:1 NO +1 NC

Dual head button selection

XB5	-	A	L83	1	5
Model	-	Material	Operating mechanism	Color	Contact
XB5 series	-	A:Plastic	L83: Dual flat double-key button L84: Dual-key button for high and low	2:red+green	1:1 NO 2:1 NC 3:2 NO 4:2 NC 5:1 NO +1 NC

Dual head with light selection

XB5	-	A	W83	6	1
Model	-	Material	Operating mechanism	Base Type	Contact
XB5 series	-	A:Plastic	W83: flat double-key button (red, green) W84: Dual-key button for high and low (red, green)	6:Direct type	1:1 NO 2:1 NC 3:2 NO 4:2 NC 5:1 NO +1 NC

Pilot lamp

XB5	-	A	V6	1
Model	-	Material	Operating mechanism	Indicator color
XB5 series	-	A:Plastic	V6:pilot lamp	1:White 3:Green 4:Red 5:Yellow 6:Blue

Selector switch selection

XB5	-	A	D	2	1
Model	-	Material	Operating mechanism	Function	Contact
XB5 series	-	A:Plastic	D:Short handle J:Long handle	2:2-position selection 4:2-position right reset selection 6:2-position left key extraction right reset selection 3:3-position selection 5:3-position dual-side reset selection	1:1 NO 2:1 NC 3:2 NO 4:2 NC 5:1 NO +1 NC
			G:with key	2:2-position left key extraction selection 4:2-position dual key extraction selection 6:2-position left key extraction right reset selection 0:3rd gear three side key out selection 3:3-position middle key extraction selection 5:3-position middle key extraction dual reset selection 7:3rd gear key switch for left reset right lock	

3.XB5 series

3.1 Specification

Rate insulation voltage	380				
Ith(A)	10				
Rated working voltage	380	250	240	125	
Rated working current	AC-15	2.5	-	3	-
	DC-13	-	0.27	-	0.55

3.2 Feature

Environmental required	The button should be installed in the medium away from the explosive danger, and the installation altitude should below 2000m
Standard	IEC 60947-5-1
Temperature	-25°C ~ +55°C
Ability of seismic endured	<500Hz, amplitude is about 1.0mm
Ability of impact endured	≥10g
Protect level	IP40,

3.3 The specification of lamp bead

Type of lamp	LED		
Rated voltage	AC/DC 6V	AC/DC 12V	AC/DC 24V
	AC110V	AC220V	AC380V
Life	>30000 hours		
Voltage limited	$0.85 U_n \leq U \leq 1.1 U_n$		

3.4 Features of the contacts

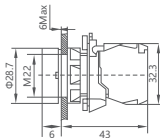
Contacts action	Slow move
Contact resistance	$\leq 50m\Omega$
Mechanical life	Self-reset button
Electric life	AC over 100,000
Short-circuit protect	RT16-10A
Wiring	Turning press terminal

3.5 Button box

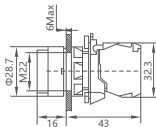
Protect level	IP40,
Cable inlet	Knock down hole, suitable for PG 13.5 cable box

4. Overall and mounting dimensions(mm)

Button switch

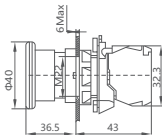


XB5-AA



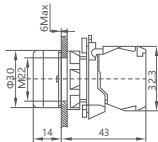
XB5-AL

Mushroom head emergency stop button



XB5-AC/S5/T/S1

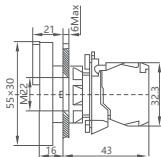
Push button with light selection and Pilot lamp



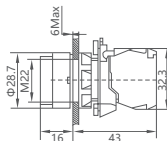
XB5-AW、XB5-AV6

**Dual head button selection and
Dual head with light selection**

**Selector
switch selection**



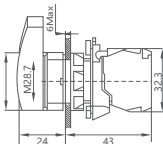
XB5-AL XB5-AW



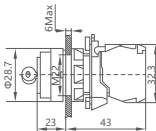
XB5-AD

Selector switch selection

Selector switch selection



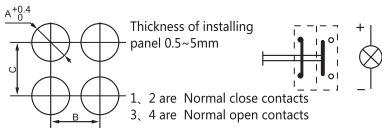
XB5-AJ



XB5-AG

5. Installation method

5.1 XB5 series opening pore requirement



Type	A	B	C	Info
Normal type	Ø22.3	> 50	> 35	1, unit: mm 2.B and C stands for the minimum size
Knob、key		> 50	> 35	
Mushroom type		> 50	> 42	
Large mushroom type		> 70	> 70	

Users should check if the product's operation is flexible, and test whether the contact of the contactors is good before installing.

When install the XB5 series button, users should insert the operating head to the mounting hole, spin it into the substrate at the back of the panel, then screw down the screw on the both ends. The screw moment should not above 0.25Nm, or there may be clamping stagnation.



CERTIFICATE

Product Model: XB5 series

Standard: IEC 60947-5-1

Inspector : **CNC001**

Production date: Printed on the product
or package.

This product is qualified according
to the delivery inspection

A vertical red rectangle containing the white text 'CNC' in a bold, sans-serif font.

XB5 series

CNC ELECTRIC

Tel: 0086-577-61989999 Fax: 0086-577-61891122

wwwcncele.com E-mail: cncele@cncele.com