

## Electrical Accessories

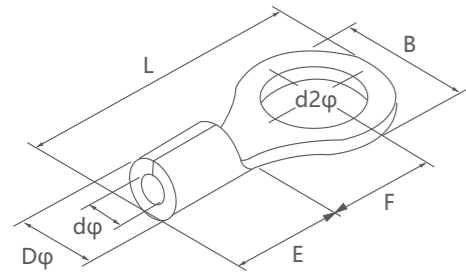
### Non-Insulated Ring Terminals



Conductor cross-section: 0.5-1.5mm<sup>2</sup>; American Wire Gauge: 22-16;  
Maximum current: I<sub>max</sub>=19A

Model	US-made bolt number	Size						
		Bolt hole diameter	B	L	F	H	DΦ	dΦ
		d2	mm	mm	mm	mm	mm	mm
RNB1.25-3	#4	3.2mm	5.7	12.6	4.95	10.0	4.3	1.7
RNBS1.25-3.5	#6	3.7mm	5.7	12.6	4.95			
RNBM1.25-3.5	#6	3.7mm	6.6	14.4	6.3			
RNBS1.25-4	#8	4.3mm	6.8	14.4	6.3			
RNBL1.25-4	#8	4.3mm	8.0	15.8	7.0			
RNB1.25-5	#10	5.3mm	8.0	15.8	7.0			
RNB1.25-6	1/4	5.3mm	11.6	21.8	11.1			
RNB1.25-8	5/16	8.4mm	11.6	21.8	11.1			
RNB1.25-10	3/8	10.5mm	13.6	25.5	13.9			

Conductor cross-section: 1.5-2.5mm<sup>2</sup>; American Wire Gauge: 16-14;  
Maximum current: I<sub>max</sub>=27A



Model	US-made bolt number	Size						
		Bolt hole diameter	B	L	F	H	DΦ	dΦ
		d2	mm	mm	mm	mm	mm	mm
RNB2-3	#4	3.2mm	6.6	12.3	4.3	4.8	4.1	2.3
RNBS2-4	#8	4.3mm	6.6	16.0	7.0			
RNBL2-4	#8	4.3mm	8.5	16.8	7.75			
RNBS2-5	#10	5.3mm	8.5	16.8	7.75			
RNBL2-5	#10	5.3mm	9.5	16.8	7.25			
RNB2-6	1/4	6.5mm	12.0	21.8	11.0			
RNB2-8	5/16	8.4mm	12.0	21.8	11.0			
RNB2-12	3/8	10.5mm	13.6	25.5	13.9			

Conductor cross-section: 2.5-4mm<sup>2</sup>; American Wire Gauge: 14-12;  
Maximum current: I<sub>max</sub>=37A

Model	US-made bolt number	Size						
		Bolt hole diameter	B	L	F	H	DΦ	dΦ
		d2	mm	mm	mm	mm	mm	mm
RNB3.5-4	#8	4.3mm	8.0	18.0	7.7	6.5	5.0	3.0
RNBS3.5-5	#10	5.3mm	8.0	18.0	7.7			
RNBL3.5-5	#10	5.3mm	12.0	12.0	7.7			
RNB3.5-6	1/4	6.5mm	12.0	12.0	7.7			
RNB3.5-8	5/16	8.4mm	15.0	27.0	13.5			
RNB3.5-10	3/8	10.5mm	15.0	27.0	13.5			

Conductor cross-section: 4-6mm<sup>2</sup>; American Wire Gauge: 12-10;  
Maximum current: I<sub>max</sub>=48A

Model	US-made bolt number	Size						
		Bolt hole diameter	B	L	F	H	DΦ	dΦ
		d2	mm	mm	mm	mm	mm	mm
RNBS5.5-4	#8	4.3mm	7.2	15.7	5.9	6.8	5.6	3.4
RNBL5.5-4	#8	4.3mm	9.5	19.8	8.3			
RNB5.5-6	1/4	6.5mm	12.0	25.8	13.0			
RNB5.5-8	5/16	8.4mm	15.0	28.0	13.7			
RNB5.5-10	3/8	10.5mm	15.0	28.0	13.7			
RNB5.5-12	1/2	13.0mm	19.2	32.4	16			

## Electrical Accessories

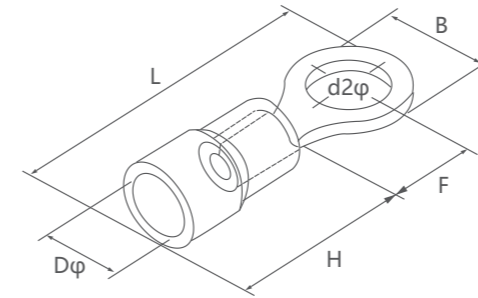
### Non-Insulated Ring Terminals



Conductor cross-section: 6-10mm<sup>2</sup>; American Wire Gauge: 8;  
Maximum current: I<sub>max</sub>=62A

Model	US-made bolt number	Size						
		Bolt hole diameter	B	L	F	H	DΦ	dΦ
		d2	mm	mm	mm	mm	mm	mm
RNB8-4	#8	4.3mm	12.0	23.8	9.3	8.5	7.2	4.5
RNBS8-5	#10	5.3mm	8.8	23.8	11.1			
RNBM8-5	#10	5.3mm	12.0	23.8	9.3			
RNBL8-5	#10	5.3mm	15.0	29.8	13.8			
RNBS8-6	1/4	6.5mm	12.0	23.8	9.3			
RNBL8-6	1/4	6.5mm	15.0	29.8	13.8			
RNB8-8	5/16	8.4mm	15.0	29.8	13.8			
RNB8-10	3/8	10.5mm	15.0	29.8	13.8			

Conductor cross-section: 10-16mm<sup>2</sup>; American Wire Gauge: 6;  
Maximum current: I<sub>max</sub>=88A



Model	US-made bolt number	Size						
		Bolt hole diameter	B	L	F	H	DΦ	dΦ
		d2	mm	mm	mm	mm	mm	mm
RNB14-4	#8	4.3mm	12.0	29.8	13.3	10.5	9.0	5.8
RNB14-5	#10	5.3mm	12.0	29.8	13.3			
RNBS14-6	1/4	6.5mm	12.0	29.8	13.3			
RNBL14-6	1/4	6.5mm	16.0	32.8	13.3			
RNB14-8	5/16	8.4mm	16.0	32.8	14.5			
RNB14-10	3/8	10.5mm	16.0	32.8	14.5			
RNB14-12	1/2	13.0mm	22.0	41.0	19.5			

Conductor cross-section: 16-25mm<sup>2</sup>; American Wire Gauge: 4;  
Maximum current: I<sub>max</sub>=115A

Model	US-made bolt number	Size						
		Bolt hole diameter	B	L	F	H	DΦ	dΦ
		d2	mm	mm	mm	mm	mm	mm
RNBS22-5	#10	5.3mm	12.2	33.2	14.5	12.0	11.5	7.7
RNBL22-5	#10	5.3mm	16.5	33.7	13.5			
RNBS22-6	1/4	6.3mm	12.2	33.2	14.5			
RNBL22-6	1/4	6.3mm	16.5	33.7	13.5			
RNB22-8	5/16	8.4mm	16.5	33.7	13.5			
RNB22-10	3/8	10.5mm	16.5	33.7	13.5			
RNB22-11	7/16	11.5mm	22.0	42.5	19.5			
RNB22-12	1/2	13.0mm	22.0	42.5	19.5			

Conductor cross-section: 25-50mm<sup>2</sup>; American Wire Gauge: 4;  
Maximum current: I<sub>max</sub>=160A

Model	US-made bolt number	Size						
		Bolt hole diameter	B	L	F	H	DΦ	dΦ
		d2	mm	mm	mm	mm	mm	mm
RNB38-5	#10	5.3mm	15.3	39.0	18.3	14.0	13.5	9.4
RNB38-6	1/4	6.5mm	15.3	39.0	18.3			
RNBS38-8	5/16	8.4mm	15.3	39.0	18.3			
RNBL38-8	5/16	8.4mm	22.0	42.7	17.7			
RNBS38-10	3/8	10.5mm	15.3	39.0	8.3			
RNBL38-10	3/8	10.5mm	22.0	42.7	17.7			
RNB38-11	7/16	11.5mm	22.0	42.7	17.7			
RNB38-12	1/2	13.0mm	22.0	42.7	17.7			