

MV Transformer CT&PT

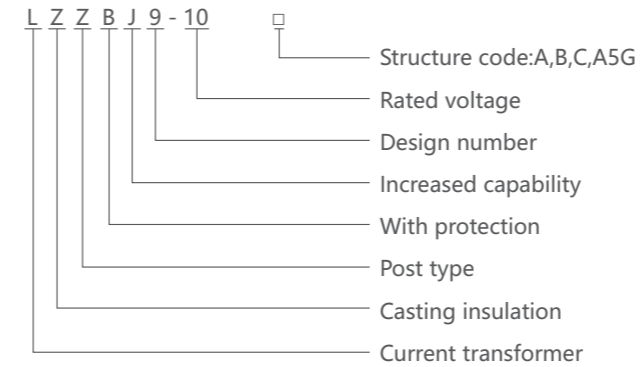
LZZBJ9-10 Current Transformer

- ☞ This current transformer is of a whole sealing casting insulation pillar type, used for measurement of current and electric energy as well as relay protection in the AC circuit of rated frequency 50Hz and rated voltage 10kV.
- ☞ Standard: IEC 61869-2

General

MV Transformer CT&PT LZZBJ9-10 Current Transformer

Selection



Technical data

- The performance of products is conformed to IEC standard and GB1208-2006 Current Transformer.
- Rated insulation level: 12/42/75kV
- Load power factor: $\cos\Phi=0.8$ (Lag)
- Rated frequency: 50Hz
- Rated secondary current: 5A, 1A
- Partial discharge level: In conformity to GB5583-85 standard, its partial discharge is not more than 20PC.

Technical data

Model	Rated primary current (A)	Accurate class combination	Rated secondary output(VA)				Rated short-time thermal current (KA virtual value)	Rated dynamic stability current (KA peak)
			0.2,0.2S	0.5, 0.5S	10P10	10P15		
LZZBJ9-10 (A,B,C)	5	0.2/10P 0.2S/10P 0.5/10P 0.5S/10P	10	10	10	15	2	5
	10						4.5	11
	15						6.3	15
	20						9.5	23
	30						12.6	31.5
	40						18	45
	50						22	55
	70						36	80
	100-200						50	90
	300-600						72	100
	800-1250						80	110
1500-3150	100	130						

MV Transformer CT&PT
LZZBJ9-10 Current Transformer

Model	Rated Primary Current (A)	Accurate class combination	Rated output (VA)	Rated short-time thermal current (KA virtual value)	Rated dynamic stability current (KA peak)
LZZBJ9-10A5G	20,30,40,50,75,100	0.2/0.2/5P10	10/10/40	150I1n	375I1n
	150,200	0.2/0.5/5P15	10/15/30	31.5	80
	300,400	0.2/0.5/5P20	10/15/20	45	112.5
	500	0.2/5P10/10P15	10/20/20	63	130
	600,800	0.5/5P10/10P20	10/20/15	63	130
		0.2/0.2/5P10	10/10/40		
		0.2/0.5/5P15	10/15/30		
		0.2/0.5/5P20	10/15/20		
		0.2/5P10/10P15	10/20/20		
		0.5/5P10/10P20	10/20/15		
	1000,1200,1250	0.2/0.2/5P10	10/10/40	80	160
		0.2/0.5/5P15	10/15/30		
	0.2/0.5/5P20	10/15/20			
	0.2/5P10/10P15	10/20/20			
	0.5/5P10/10P20	10/20/15			
1500	0.2/0.2/5P10	10/10/40	100	160	
	0.2/0.5/5P15	10/15/30			
	0.2/0.5/5P20	10/15/20			
2000	0.2/5P10/10P15	10/20/20	100	160	
	0.5/5P10/10P20	10/20/15			
2500	0.2/0.2/5P10	10/10/40	100	160	
	0.2/0.5/5P15	10/15/30			
	0.2/0.5/5P20	10/15/20			
	0.2/5P10/10P15	10/20/20			
	0.5/5P10/10P20	10/20/15			
3000,3150	0.2/0.2/5P10	10/10/40	100	160	
	0.2/0.5/5P15	10/15/30			
	0.2/0.5/5P20	10/15/20			
	0.2/5P10/10P15	10/20/20			
	0.5/5P10/10P20	10/20/15			

MV Transformer CT&PT
LZZBJ9-10 Current Transformer

Outline and Installation

Fig 1 Overall and installation dimension of LZZBJ9-10A current transformer

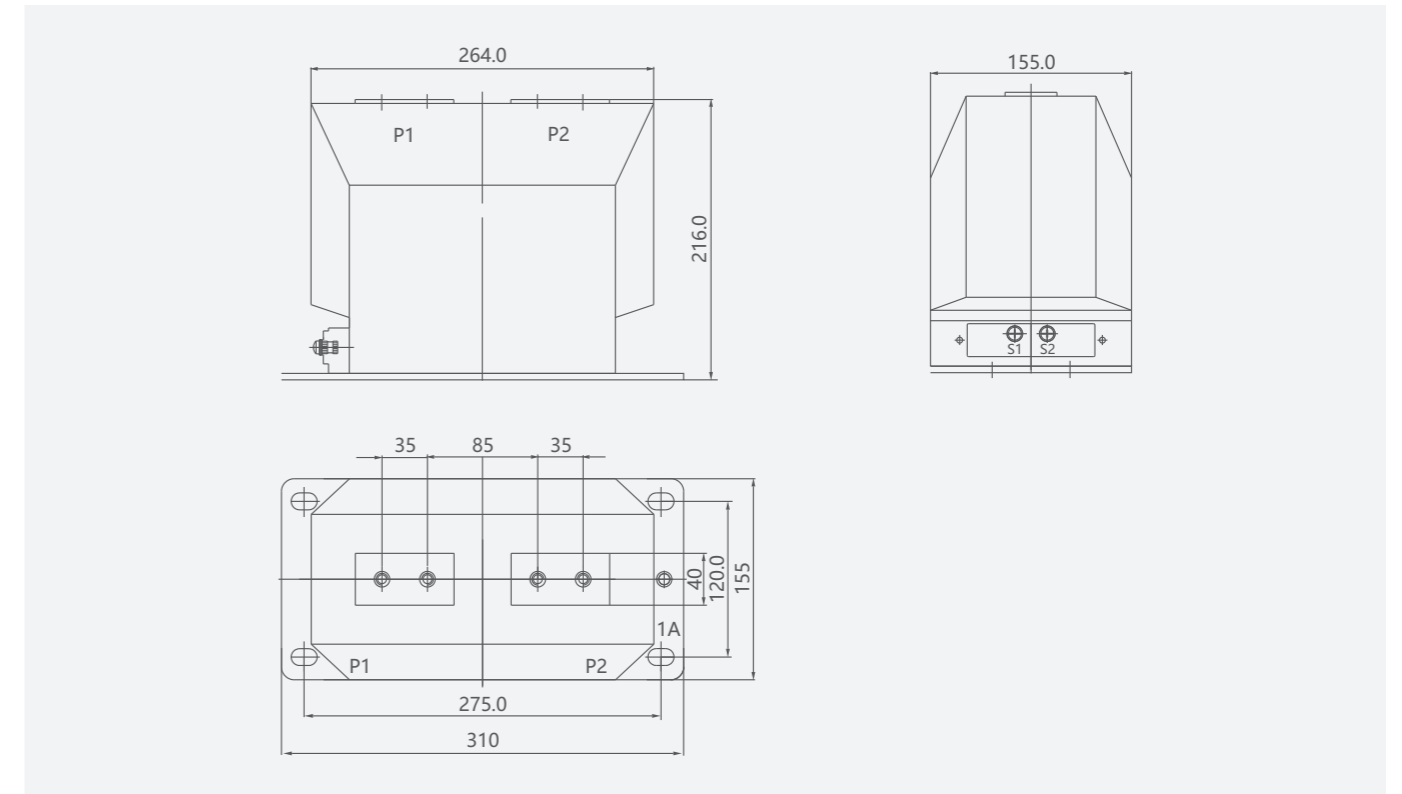
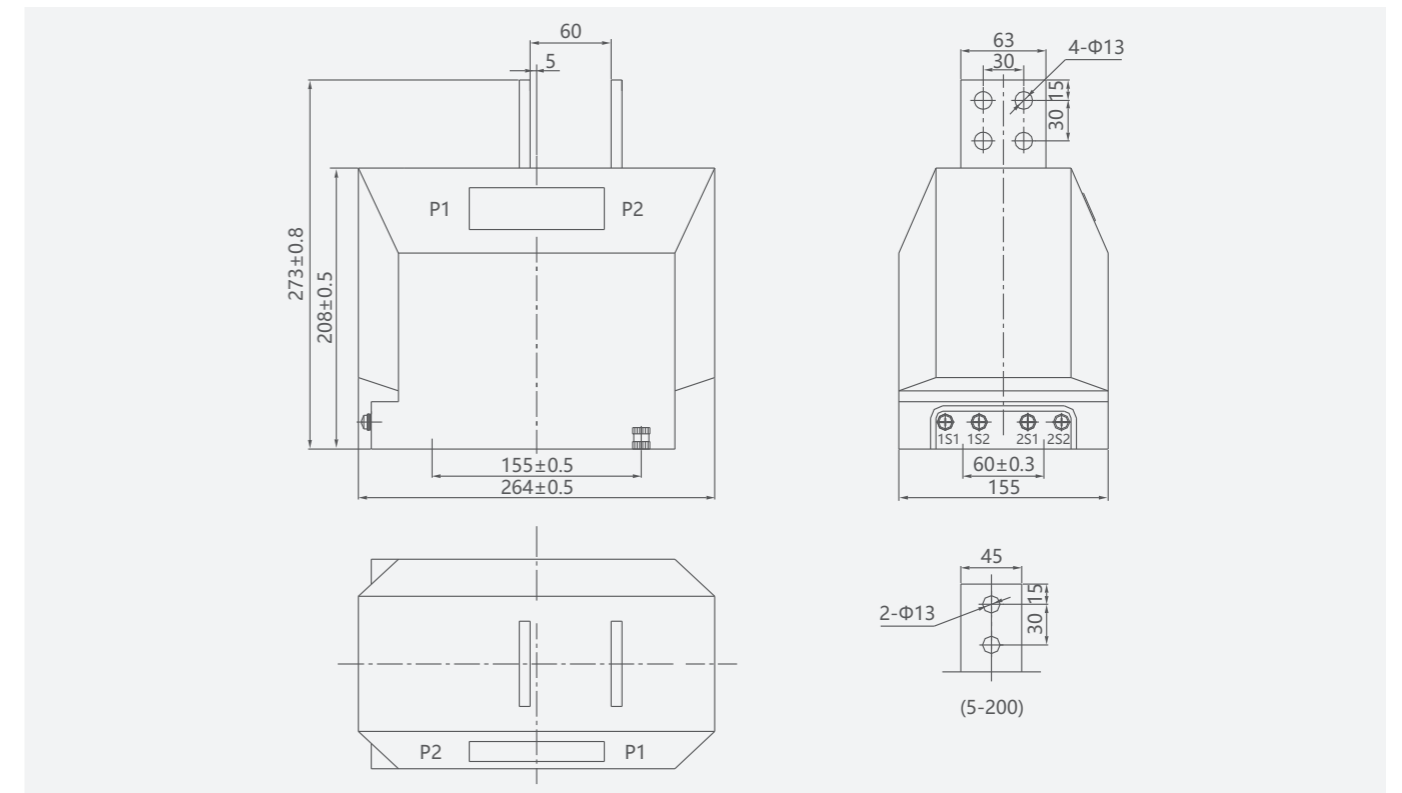


Fig 2 Overall and installation dimension of LZZBJ9-10B current transformer



MV Transformer CT&PT

LZZBJ9-10 Current Transformer

Outline and Installation

Fig 3 Overall and installation dimension of LZZBJ9-10C current transformer

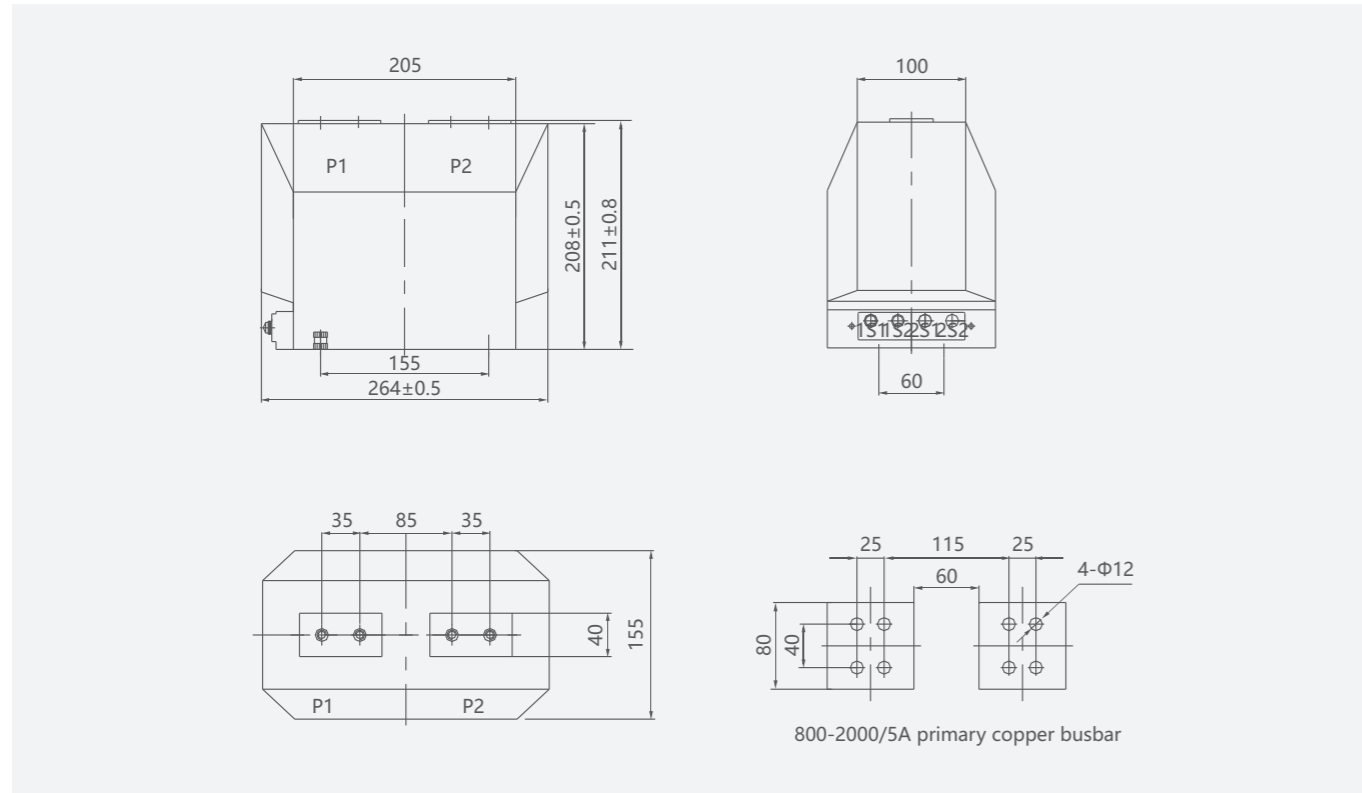
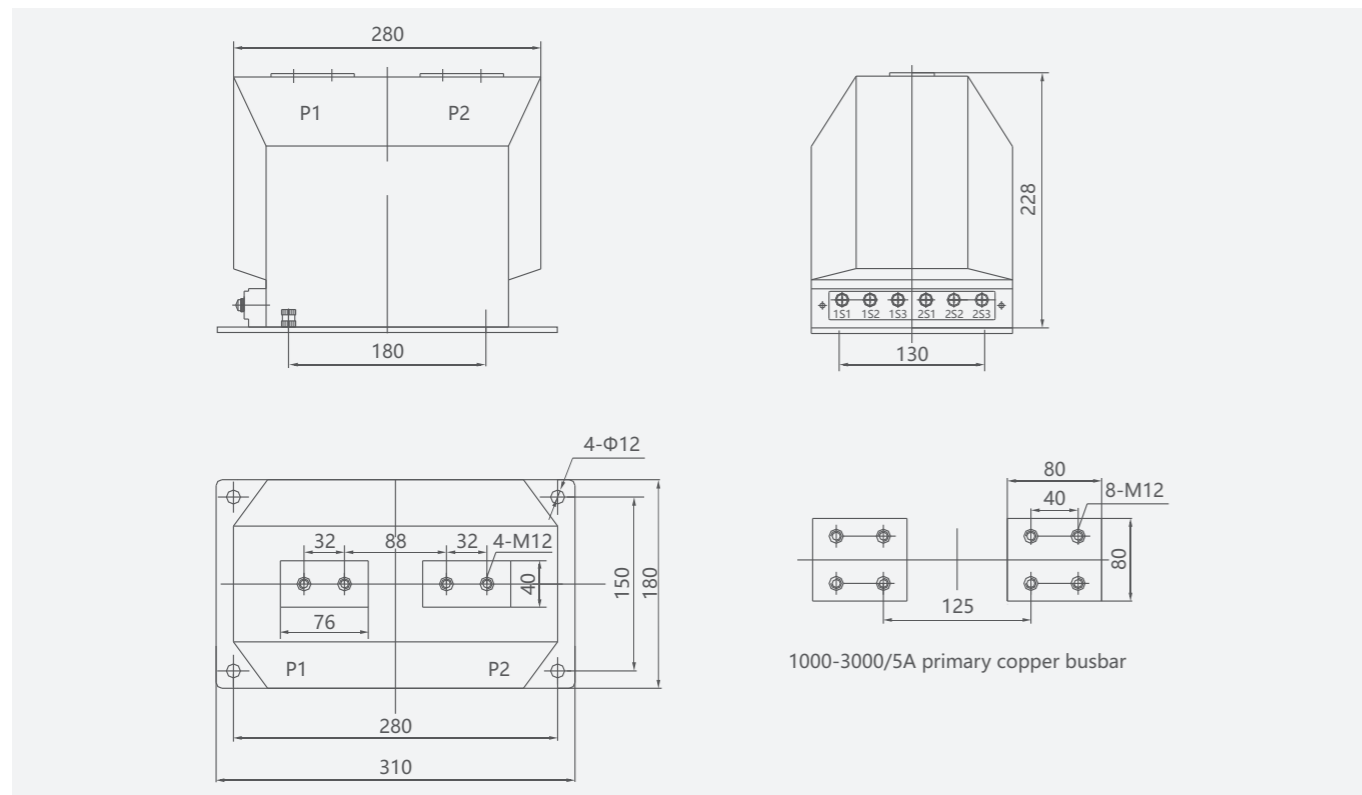


Fig 4 Overall and installation dimension of LZZBJ9-10C 2 current transformer



MV Transformer CT&PT

LZZBJ9-10 Current Transformer

Outline and Installation

Fig 5 Overall and installation dimension of LZZBJ9-10A5G 5-1000A current transformer

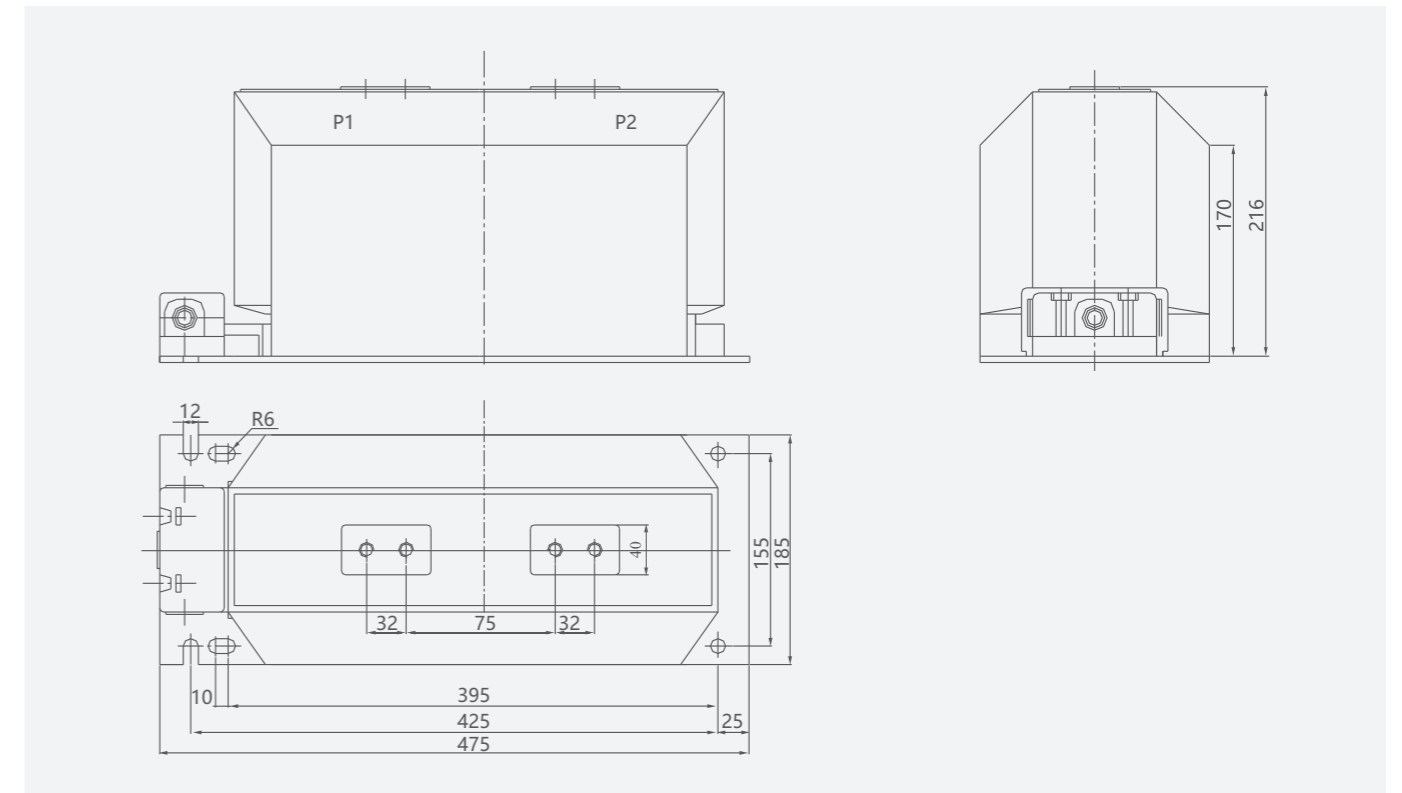


Fig 6 Overall and installation dimension of LZZBJ9-10A5G 1200-3000A current transformer

