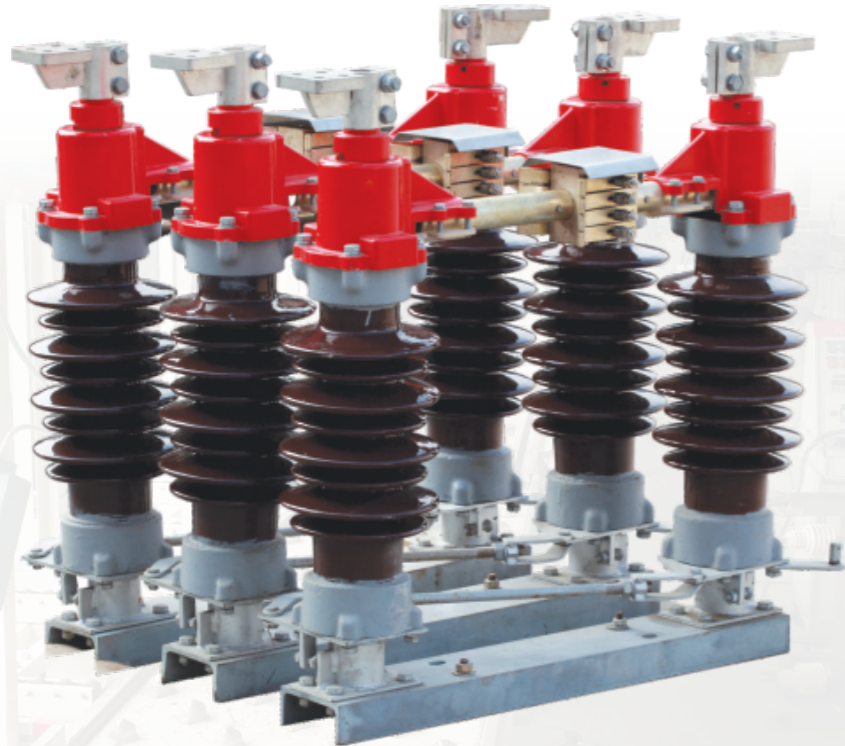


MV Isolation Switch

GW4 Outdoor Isolation Switch

GW4 outdoor MV isolation switch is used for three-phase AC 50Hz outdoor high-voltage electrical equipment, switching of lines under high-voltage no-load conditions, and electrically isolating electrical equipment such as high-voltage busbars, circuit breakers, and live high-voltage equipment for maintenance voltage lines, can also be used to switch small capacitor or inductor current. When the knife is in the normal open circuit position, it can provide insulation distance that meets safety requirements. Widely used in 35-110kV substations.

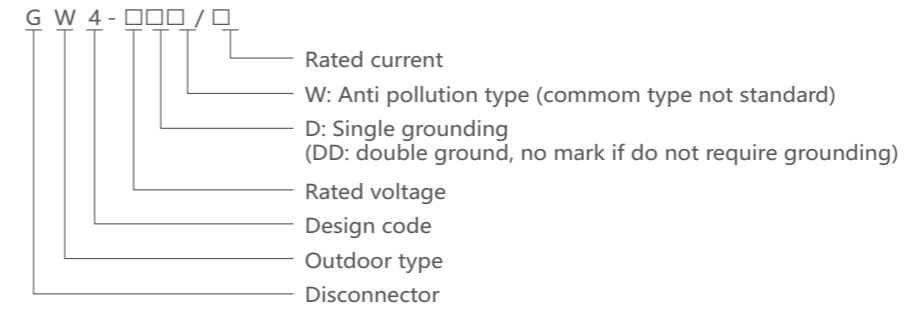
General



MV Isolation Switch

GW4 Outdoor Isolation Switch

Selection



Technical data

Item	Unit	Parameters				
		GW4-40.5	GW4-72.5	GW4-126	GW4-126G	GW4-145
Rated voltage	KV	40.5	72.5	126	126	145
Rated current	A	630 1250 2000 2500	630 1250 2000 2500 4000	630 1250 2000 2500	630 1250	1250 2000 2500
Rated short-time withstand current (RMS)	KA	20 31.5 40(46)	20 31.5 40(46)	20 31.5 40(46)	20 31.5	20 31.5 40(46)
Rated peak withstand current (peak)	KA	50 80 100(104)	50 80 100(104)	50 80 100(104)	50 80	50 80 100(104)
Rated short-time withstand voltage (effective value)	To the ground	80	140	185(230)	185	375
	Fracture	110	160	210(265)	210	315
Rated lightning impulse withstand voltage (peak)	To the ground	185	325	450(550)	450	650
	Fracture	215	375	520(630)	550	750
Wiring terminal rated the horizontal tension		490(735)	735	735	735	960
Weight of single pole		80	200	240	300	300

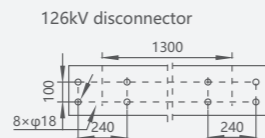
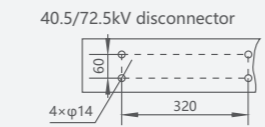
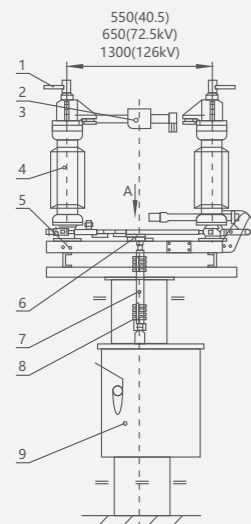
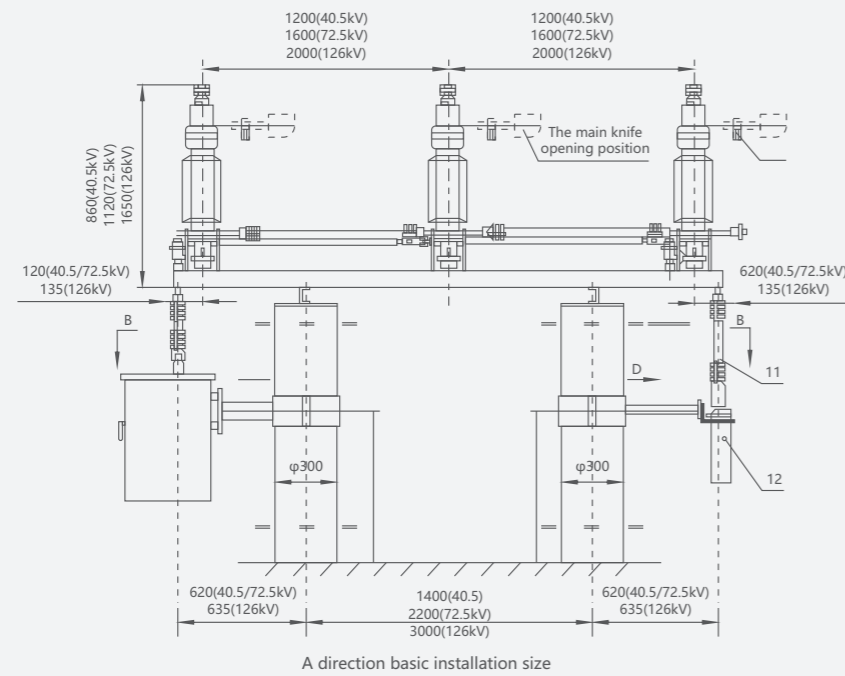
MV Isolation Switch

GW4 Outdoor Isolation Switch

Operating conditions

1. Ambient temperature: upper limit +40°C, lower limit -30°C
2. Altitude: no more than 3000m;
3. Wind speed: no more than 35m/s;
4. Earthquake intensity: do not exceed 8 degree;
5. Pollution level: no more than III class
6. No severe vibration, no corrosive gas, no fire, no explosion danger place.

Overall and mounting dimensions(mm)



1. Wiring terminal
2. Contact
3. Contact finger
4. Support insulator
5. Switch base
6. The main knife operating crank arm
7. The main knife vertical rod (galvanized steel pipe of φ45×45)
8. Anchor ear
9. The main knife operating mechanism (CJ6 or CS17)
10. Grounding contact finger
11. The earth knife vertical rod (galvanized steel pipe of φ45×5)
12. The earth knife operating mechanism (CJ78CS17)