

# CJ19i(CJ19s) Contactor for Capacitor Switching

## Overview



**Opening design**  
It's convenient for customers to tighten and loosen screws at any time.

**Unique slider design**

- Turn tedious into simplicity, improve installation and disassembly efficiency.
- Realize tool-free installation and disassembly.
- The original tedious disassembly becomes very simply.

**Fire resistance shell**  
High temperature resistance, corrosion resistance, safety and security.

**Dust prevention**  
Add dust proof sticker, easy to deal with dusty environment, intimate care.

**Integrated signage, hard to fall off.**

**Pure copper coils**  
Automatic winding, enamelled wire above QA-180

**Customized silicon steel sheet**  
DW600, big iron core, actuate more smoothly.

**Silver alloy contact**  
Stronger electrical conductivity, more sensitive, not easy to oxidize.

# CJ19i(CJ19s) Contactor for Capacitor Switching



CJ19i



CJ19i



Cj19s



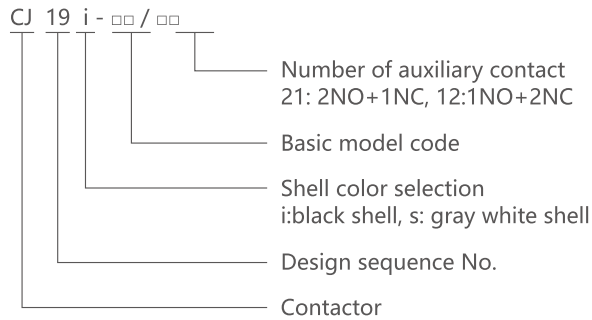
Cj19s

## General

Cj19i contactor for capacitor switching (hereinafter called contactor) is suitable for the circuit of AC 50Hz/60Hz with rated voltage up to 690V. It is mainly used to add low voltage reactive power compensation equipment or cut off low voltage parallel capacitor. The contactor is equipped with a device to suppress the inrush current, which can effectively reduce the impact of the making inrush current on the capacitor and suppress the over-voltage when the capacitor is cut off.

Standard: IEC/EN 60947-4-1.

## Type designation



## Operating conditions

- Ambient temperature:-5°C~+40°C, the average during 24 hours should not exceed +35°C;
- Altitude:≤2000m;
- Atmosphere conditions: At mounting site, relative humidity not exceed 50% at the max temperature of +40°C, higher relative humidity is allowable under lower temperature. For example, RH could be 90% at +20°C, special measures should be taken for occurrence of condensation;
- Pollution degree: 3
- Installation category: III
- Installation conditions: the inclination between installation plane and vertical plane is within ±5°
- Impact and shake: the products should locate in the places where there are no obvious impact and shake.

## Motor Control & Protection

# CJ19i(CJ19s) Contactor for Capacitor Switching

### Technical data

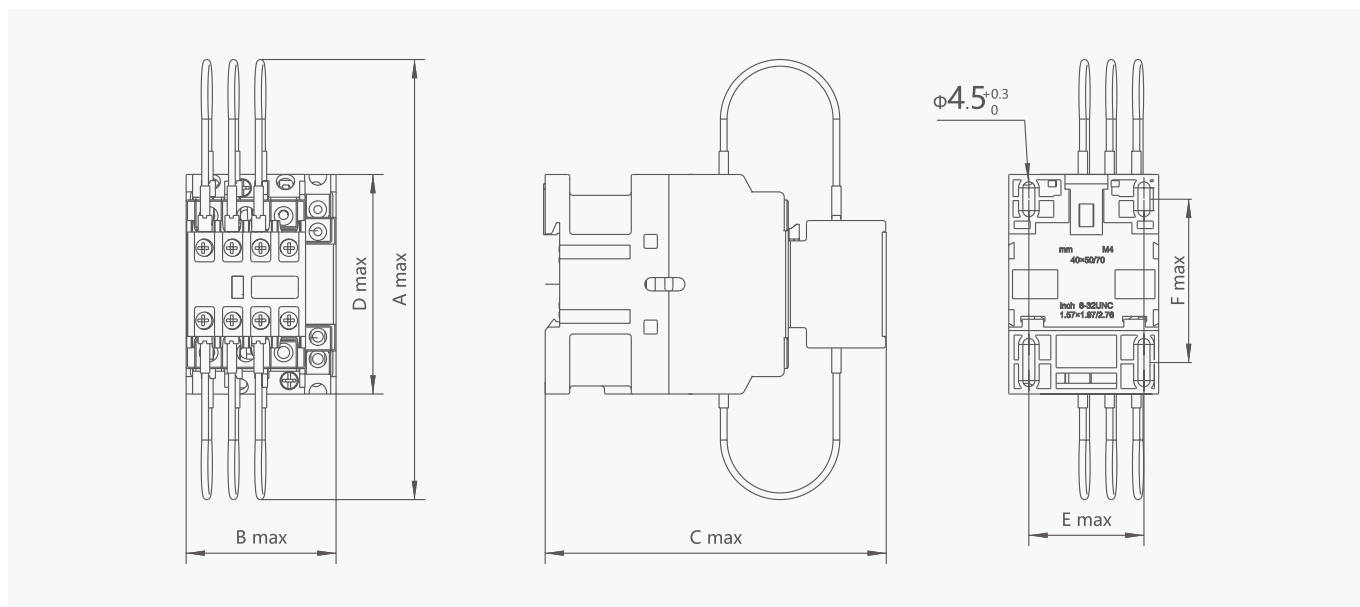
Model			CJ19i-25 CJ19s-25	CJ19i-32 CJ19s-32	CJ19i-43 CJ19s-43	CJ19i-63 CJ19s-63	CJ19i-95 CJ19s-95	CJ19i-115 CJ19s-115
Main circuit features								
Rated operating voltage(Ue)	V	380/400						
Rated isolation voltage(Ui)	V	690						
Rated current of controllable capacitor(I <sub>n</sub> )	AC-6b 400V	A	17	29	36	43	72	87
Rated capacity of controllable capacitor(Q <sub>n</sub> )	AC-6b 230V	kVar	6	9	10	15	22.5	35
	AC-6b 400V	kVar	12	18	20	30	45	60
Rated conventional heating current(I <sub>th</sub> )	A	25	32	43	63	95	115	
Restrained surge capacity	A	≤35I <sub>n</sub>				≤55I <sub>n</sub>		
Mechanical durability	10 <sup>4</sup> times	100						
Electrical durability	AC-6b 400V	10 <sup>4</sup> times	15				12	
Operating frequency cycles/h	AC-6b 400V	times/h	300				120	
Coil features								
Controlled power voltage (U <sub>s</sub> )	AC50Hz	V	110, 220, 380					
Operating voltage range	operation voltage	V	85%~110%U <sub>s</sub> when install inclination angle is +22.5°; 70%~120%U <sub>s</sub> when install inclination angle is ±5°;					
	release voltage	V	20%~75%U <sub>s</sub> when install inclination angle is +22.5°; 20%~65%U <sub>s</sub> when install inclination angle is ±5°;					
Auxiliary contact features								
Number of auxiliary contact			12, 21					
Rated conventional heating current(I <sub>th</sub> )	A	10						
The minimum load can be connected to			6V×10mA					

## Motor Control & Protection

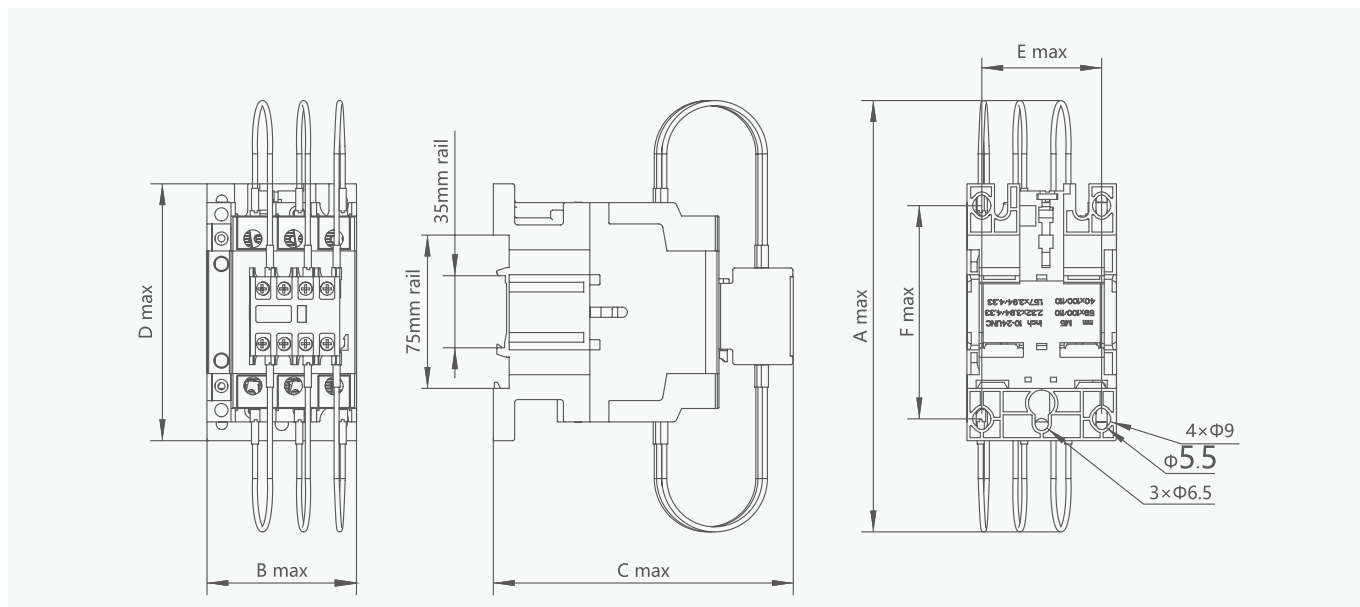
# CJ19i(CJ19s) Contactor for Capacitor Switching

### Overall and mounting dimensions

CJ19i(CJ19s)-25, 32, 43



CJ19i(CJ19s)-25, 32, 43



Model	overall dimensions				mounting dimensions	
	Amax	Bmax	Cmax	Dmax	Emax	Fmax
CJ19i(CJ19s)-25	176	45.5	122	74.5	35	50/60
CJ19i(CJ19s)-32	180	56.5	132	83	40	50/60
CJ19i(CJ19s)-43	180	56.5	132	83	40	50/60
CJ19i(CJ19s)-63	190	74.5	154	127.5	59	100/110
CJ19i(CJ19s)-95	190	85.5	160	127.5	67	100/110
CJ19i(CJ19s)-115	190	85.5	160	127.5	67	100/110

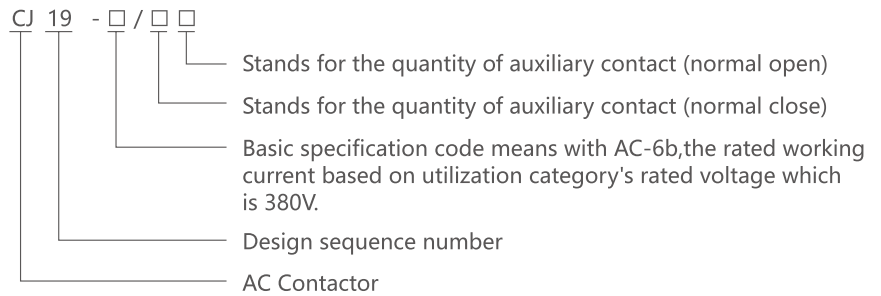
# CJ19 Contactor for Capacitor Switching



## General

CJ19 series AC Contactor is suitable for those circuits whose rated voltage is up to 400V AC 50Hz or 60Hz. CJ19 is used to combine with low voltage reactive power compensators or cut off low voltage shunt capacitor. CJ19 series AC Contactor has restraining device to effectively decrease impact caused by inrush transient current when switch on or over voltage when switch off.

## Type designation



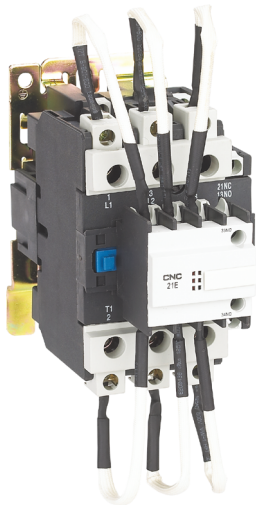
Note:

Acquiesce in 3 pairs of N/O main auxiliary contacts and 3 pairs of N/O precharge auxiliary contacts

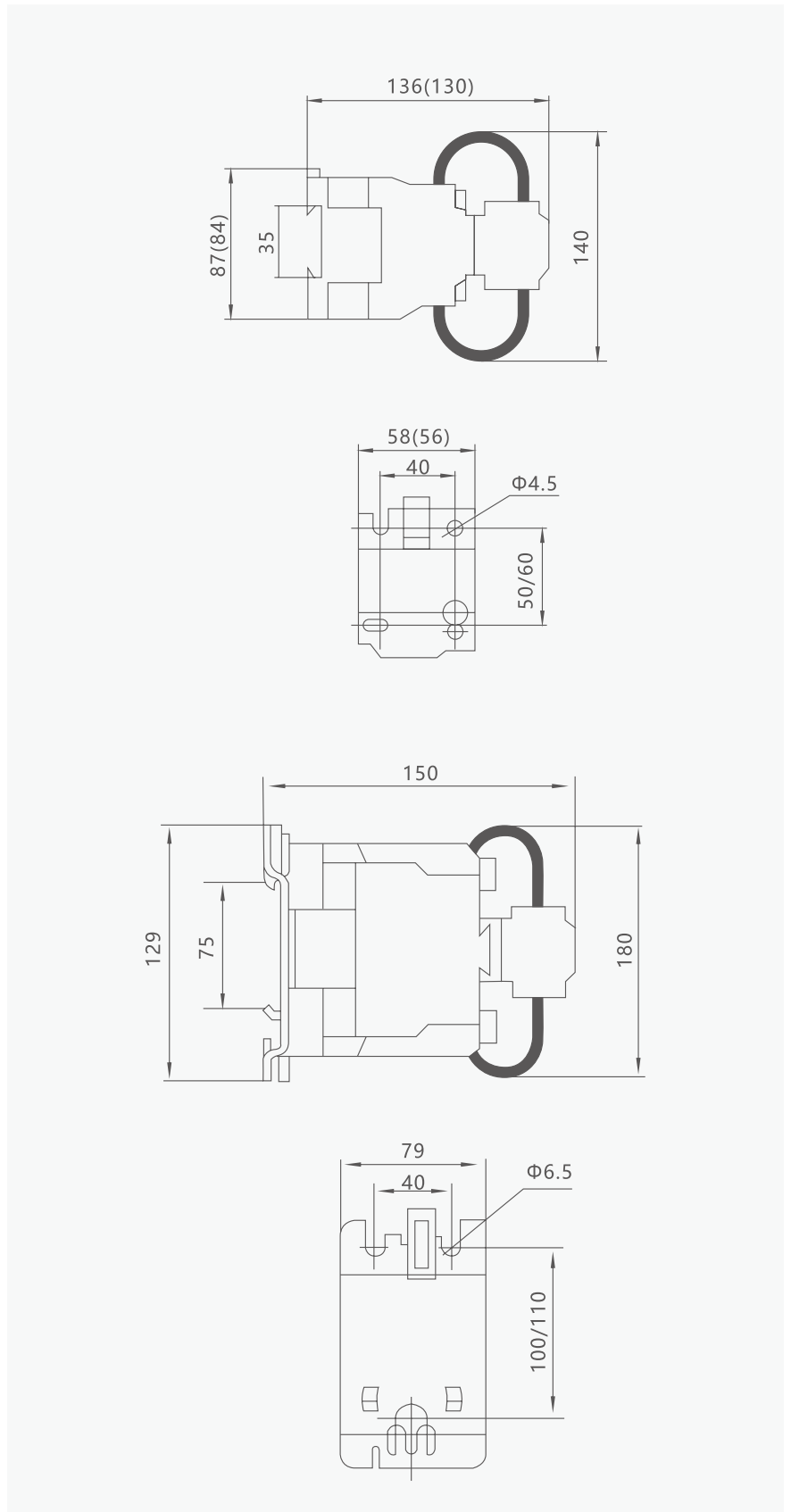
## Technical data

Item	Type	Type					
		CJ19-25	CJ19-32	CJ19-43	CJ19-63	CJ19-95	CJ19-115
Controllable capacitor capacity (kvar)	230V	6	9	10	15	22.5	35
	400V	12	18	20	30	45	60
Rated insulation voltage (V)		500					
Rated operating voltage (V)		380					
Conventional thermal current (A)		25	32	43	63	95	115
AC-6b rated working current (A)		17	23	29	43	72	87
Restrained surge capacity/ Capacitor rated current		20le					
Controlled power voltage (V)		48, 110, 127, 220, 380					
Conventional thermal current of auxiliary contacts (A)		6			10		
Operating frequency (cycles/h)		120					
Electrical life ( $\times 10^5$ time)		1					
Mechanical life ( $\times 10^5$ time)		10					

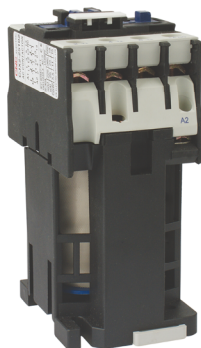
# CJ19 Contactor for Capacitor Switching



Overall and mounting dimensions(mm)



# CJX2-Z DC Coil AC Contactor



CJX2-09~32Z



CJX2-40~95Z

## General

CJX2-Z series operational contactors are suitable for circuits with a rated voltage of 660V AC 50Hz or 60Hz and a rated current of 9-95A under an AC-3/380v load. It is used for making, disconnecting and frequently starting motors in remote control circuits. It can also be used in combination with auxiliary contact groups, air delayers, thermal relay devices, etc.

## Technical data

Type		CJX2-09Z	CJX2-12Z	CJX2-18Z	CJX2-25Z	CJX2-32Z	
Rated working current(A)	380VAC	AC3	9	12	18	25	32
		AC4	3.5	5	7.7	8.5	12
	660VAC	AC3	6.6	8.9	12	18	21
		AC4	1.5	2	3.8	4.4	7.5
Rated thermal current (Ith)		20	20	32	40	50	
Controllable power (kW)	220/240VAC		2.2	3	4	5.5	7.5
	380/400VAC		4	5.5	7.5	11	15
	415VAC		4	5.5	9	11	15
	500VAC		5.5	7.5	10	15	18.5
	600/690VAC		5.58	7.5	10	15	18.5
Pole		3,4	3,4	3	3,4	3	
Rated working voltage(VAC)		380,660	380,660	380,660	380,660	380,660	
Rated insulation voltage(VAC)		660	660	660	660	660	
Mechanical life×10 <sup>4</sup>		1000	1000	1000	1000	1000	
Electrical life	AC×10 <sup>4</sup>		100	100	100	100	100
	AC4×10 <sup>4</sup>		20	20	20	20	20
Operating frequency	Electrical life	AC×10 <sup>4</sup>	1200	1200	1200	1200	1200
		AC4×10 <sup>4</sup>	300	300	300	300	300
	Mechanical life×10 <sup>4</sup>		3600	3600	3600	3600	3600
Rated controlled voltage(VDC)		24, 110, 220	24, 110, 220	24, 110, 220	24, 110, 220	24, 110, 220	
Working voltage	Close	DC%	0.85~1.1Us	0.85~1.1Us	0.85~1.1Us	0.85~1.1Us	0.85~1.1Us
	Open	DC%	0.10~0.75Us	0.10~0.75Us	0.10~0.75Us	0.10~0.75Us	0.10~0.75Us

Type		CJX2-40Z	CJX2-50Z	CJX2-65Z	CJX2-80Z	CJX2-95Z	
Rated working current(A)	380VAC	Ac3	40	50	65	80	95
		AC4	18.5	24	28	37	44
	660VAC	AC3	34	39	42	49	55
		AC4	9	12	14	17.3	21.3
Rated thermal current (Ith)		60	80	80	125	125	
Controllable power (kW)	220/240VAC		11	15	18.5	22	25
	380/400VAC		18.5	22	30	37	45
	415VAC		22	30	37	45	45
	500VAC		22	30	37	55	55
	600/690VAC		30	33	37	45	55
Pole		3,4	3,4	3,4	3,4	3,4	
Rated working voltage(VAC)		380,660	380,660	380,660	380,660	380,660	
Rated insulation voltage(VAC)		660	660	660	660	660	
Mechanical life×10 <sup>4</sup>		800	800	800	800	800	
Electrical life	AC×10 <sup>4</sup>		80	80	80	80	80
	AC4×10 <sup>4</sup>		15	15	15	15	15
Operating frequency	Electrical life	AC×10 <sup>4</sup>	600	600	600	600	600
		AC4×10 <sup>4</sup>	300	300	300	300	300
	Mechanical life×10 <sup>4</sup>		3600	3600	3600	3600	3600
Rated controlled voltage(VDC)		24, 110, 220	24, 110, 220	24, 110, 220	24, 110, 220	24, 110, 220	
Working voltage	Close	DC%	0.85~1.1Us	0.85~1.1Us	0.85~1.1Us	0.85~1.1Us	0.85~1.1Us
	Open	DC%	0.10~0.75Us	0.10~0.75Us	0.10~0.75Us	0.10~0.75Us	0.10~0.75Us



## Motor Control & Protection

# CJX2-Z DC Coil AC Contactor

### Overall and mounting dimensions(mm)

CJX2-09~32Z

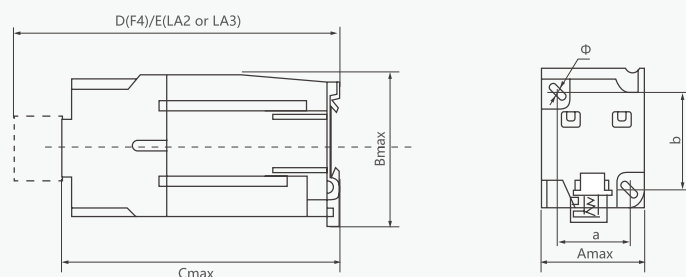


Photo 1 CJX2-09Z~32Z

CJX2-40~95Z

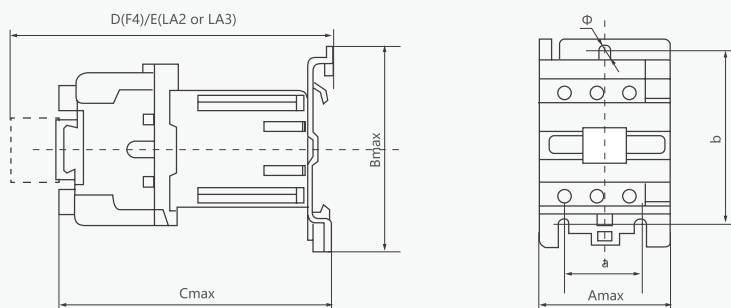


Photo 2 CJX2-40Z~95Z

Type	Amax	Bmax	Cmax	Dmax	Emax	a	b	Φ
CJX2-09Z~12Z	47	76	116	149	160	45	50/60	4.5
CJX2-18Z	47	76	120	157	177	45	50/60	4.5
CJX2-25Z	57	86	130	163	184	40	50/60	4.5
CJX2-32Z	57	86	135	168	189	40	50/60	4.5
CJX2-4011Z~6511Z	77	129	175	203	223	40	100/110	6.5
CJX2-4004Z~6504Z	85	129	174	203	223	40	100/110	6.5
CJX2-4008Z~6508Z	85	129	185	203	223	40	100/110	6.5
CJX2-8011Z~9511Z	87	129	183	212	230	40	100/110	6.5
CJX2-8004Z~9504Z	97	129	180	212	230	40	100/110	6.5
CJX2-8008Z~9508Z	97	129	191	212	230	40	100/110	6.5

Note: Not only for screw mounting, but also for 35mm [CJX2-09Z~95Z] and 75mm [CJX2-40Z~95Z] international standard Din-rail mounting.