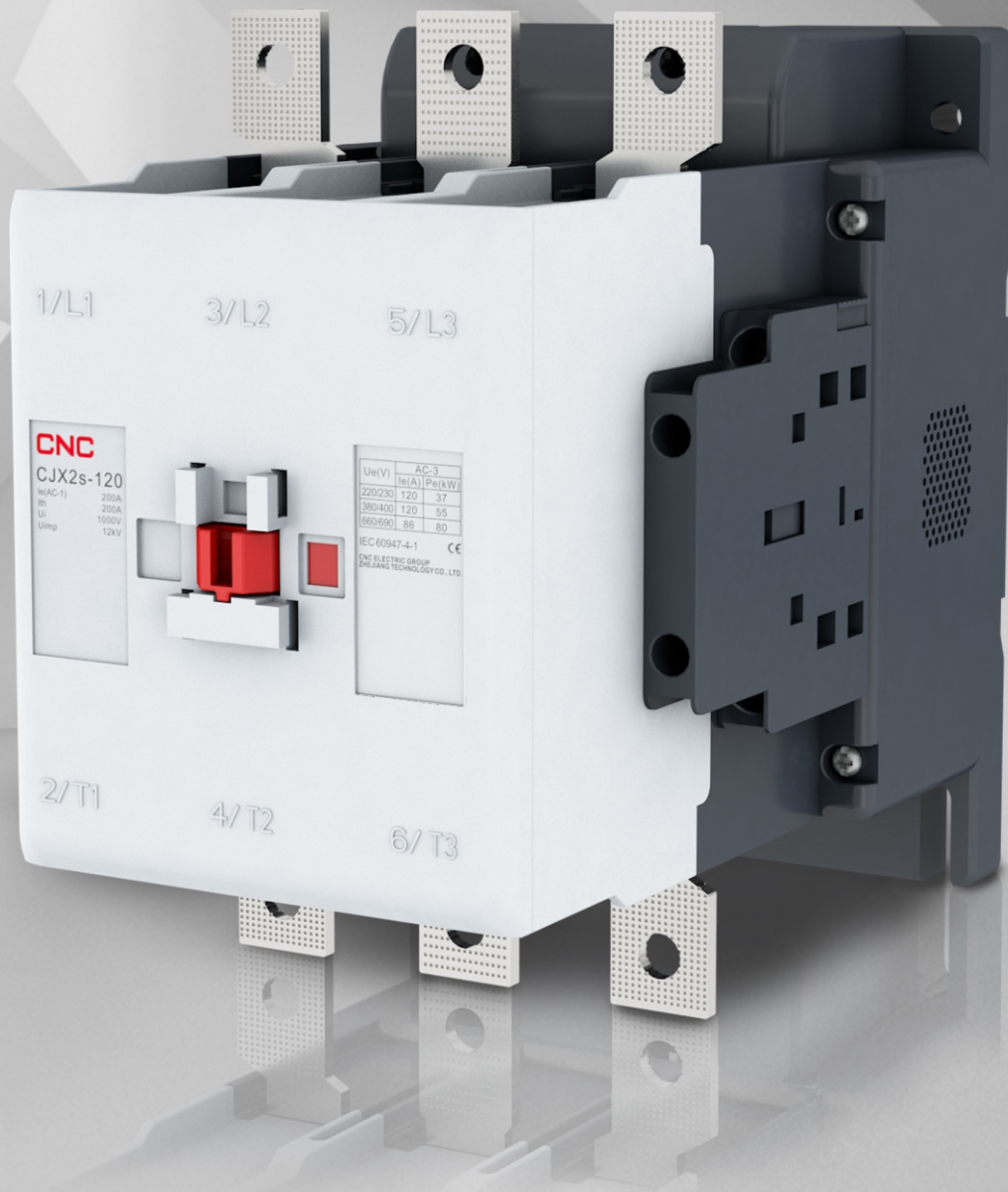


CJX2s

HIGH CURRENT AC CONTACTOR



■ New Platform



Save cabinet space
20 ~ 40%
under same current



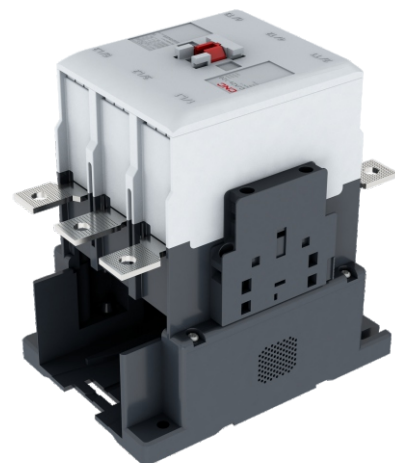
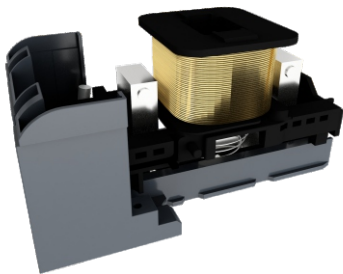
CJ20 (20% wide)



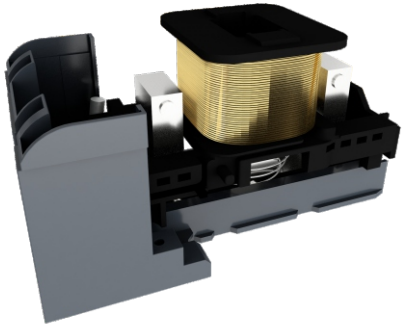
CJK2-F (40% wide)

Compared with the old products, the volume of 120~630 is reduced by 20~40% under same current, which saves cabinet space and is more economical and applicable.

■ Novel design Energy saving and High efficiency



Bottom pumping coil, easy maintenance and replacement, reducing customer operating costs.
The control loop adopts double-coil energy-saving mode for lower power consumption.



AC/DC48-130 100-250 250-500
Three-speed wide voltage to solve the problem of voltage drop



Integrated **Surge Protection**
Safe and reliable



The response electromotive force can be eliminated by itself
No interference to the line



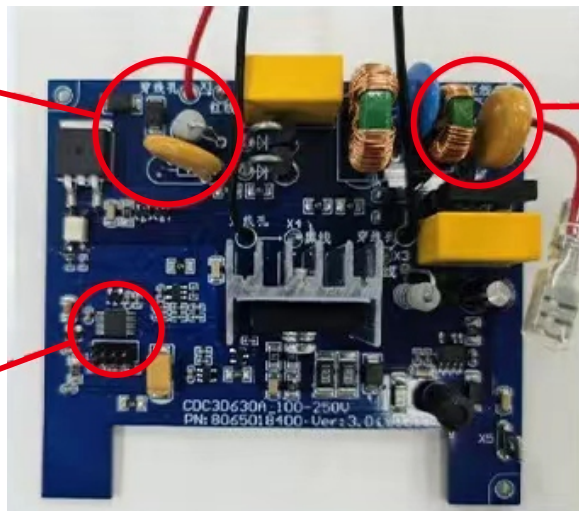
Lower energy consumption **40%**
lower than F series

Optional wide voltage electronic coil.
Flexible application of various scenarios.

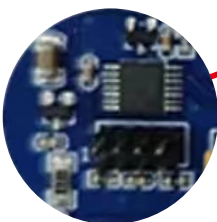
■ Electronic design



Rapid release

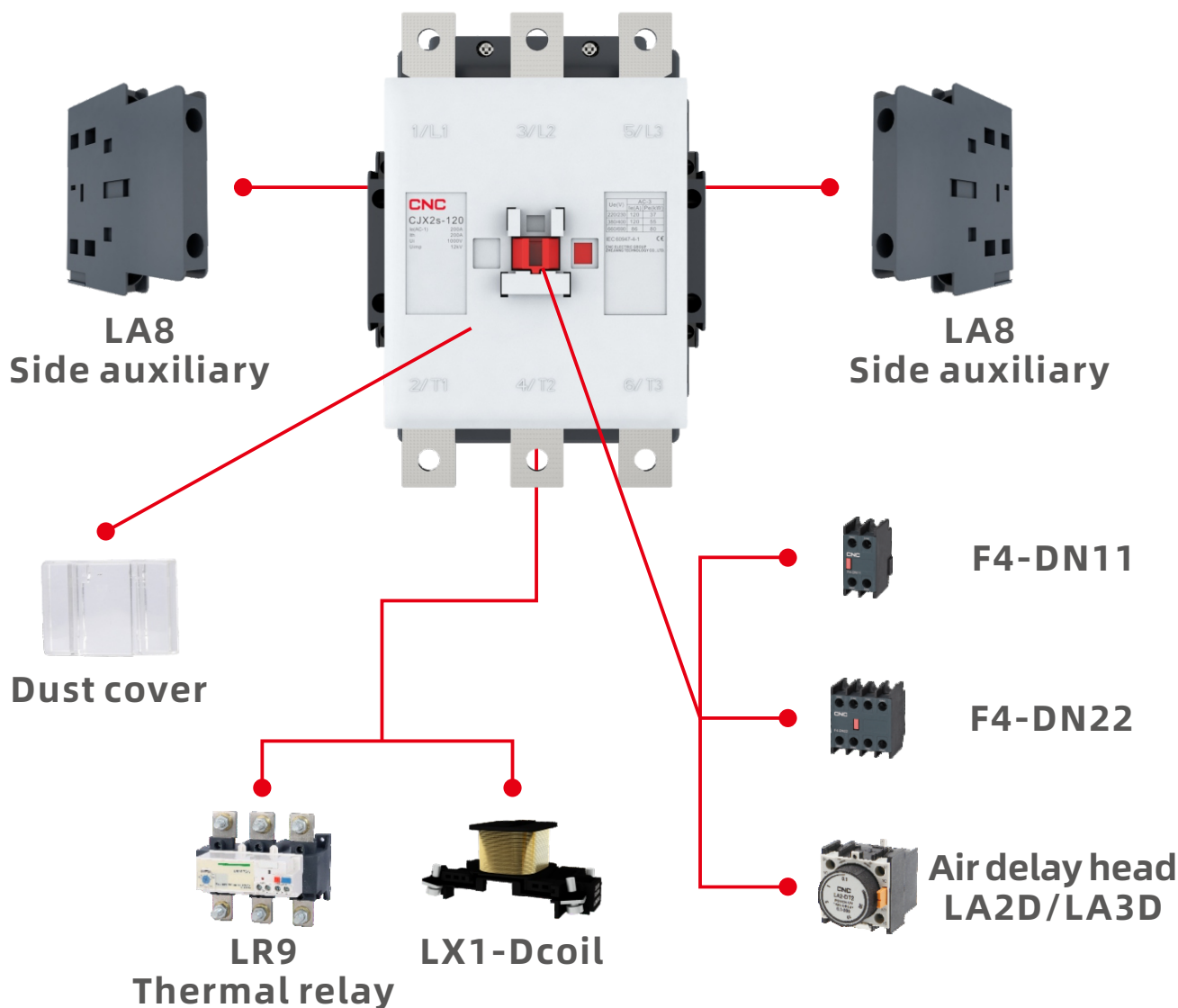


Anti-surge



Electronic design
for security guard

■ Complete accessories



Standard two LA8 Side auxiliary: To realize 2NO + 2NC auxiliary requirements, and top auxiliary can be configured as needed.

CNC
ELECTRIC

CNC ELECTRIC GROUP
ZHEJIANG TECHNOLOGY CO.,LTD.

Add: Hutou Industrial Zone, Liushi, Yueqing, Wenzhou, Zhejiang, China
Tel: 0086-577-61989999 Fax: 0086-577-61891122
Web: www.cncele.com E-mail: cncele@cncele.com

This manual is printed by CNC ELECTRIC, only used to show the relative information of this series. CNC ELECTRIC keep the right of amending this manual due to technical improved or new production process used, or mistake amended, etc without notice. Please contact with our company to confirm the relative information when place the order.